



St Johns Avenue
Kingsthorpe, Northampton

oriordanbond
SALES & LETTINGS



St Johns Avenue

Kingsthorpe
NN2 8SS

Price
£230,000

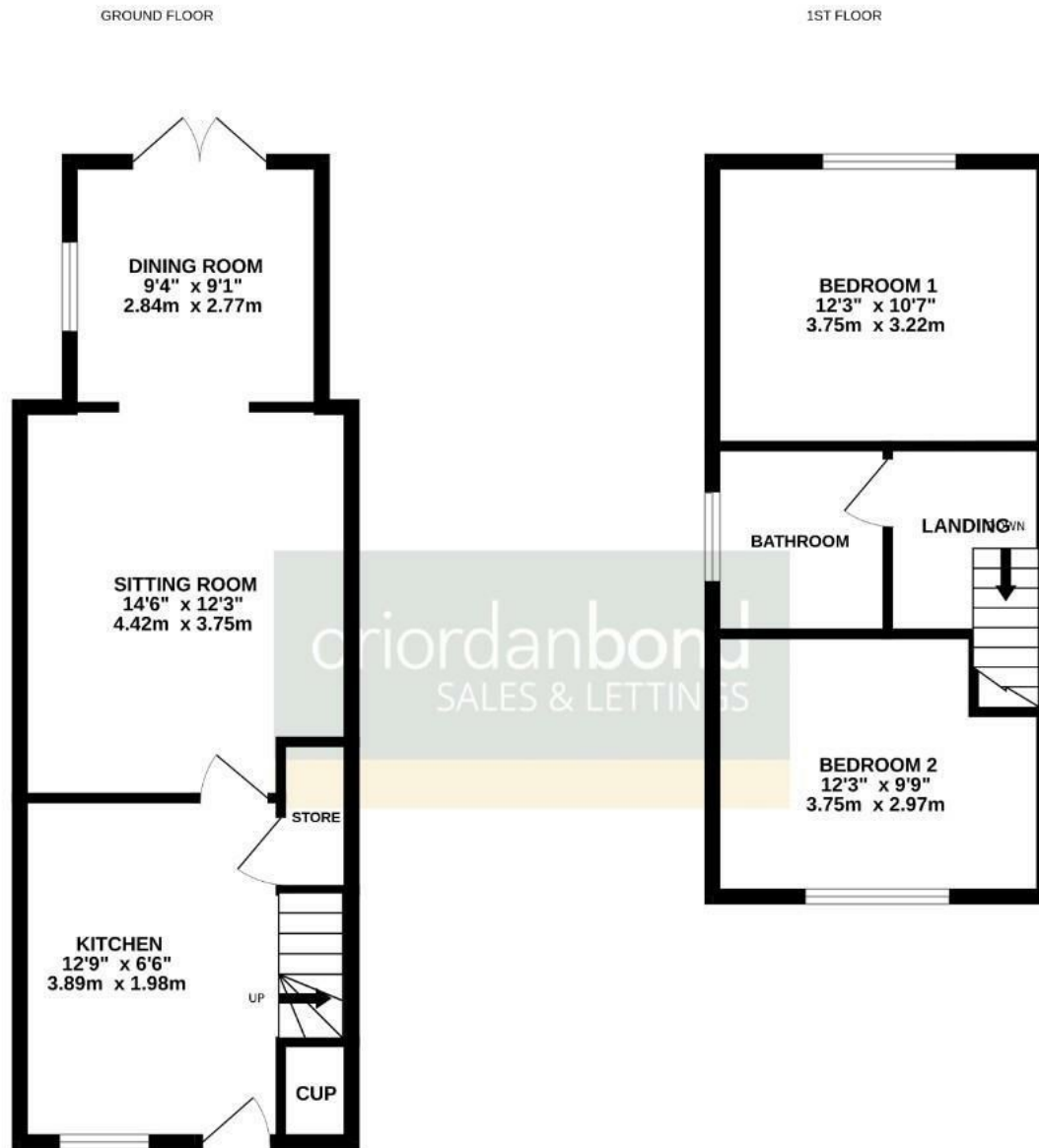
A well presented and extended two bedroom end of terrace family home, situated in this popular cul-de-sac, within Kingsthorpe. The property is within walking distance to local schools, shops and amenities.

Accommodation comprises entrance into a re-fitted kitchen with stairs rising to the first floor, open plan sitting/dining room with French doors to the rear garden, two first floor double bedrooms and a three-piece family bathroom. Outside is an enclosed low maintenance rear garden with patio area leading to artificial lawn and access to the garage. To the front of the property is a block paved driveway providing off road parking leading to a single garage. Further benefits include uPVC double glazing and gas radiator heating. (B/755/S)

- Extended two bedroom end terrace property
- Re-fitted kitchen
- Open plan sitting/dining room
- Gas radiator heating
- Enclosed low maintenance rear garden
- Driveway and garage







TOTAL FLOOR AREA : 755 sq.ft. (70.1 sq.m.) approx.

Whilst every attempt has been made to ensure the accuracy of the floorplan contained here, measurements of doors, windows, rooms and any other items are approximate and no responsibility is taken for any error, omission or mis-statement. This plan is for illustrative purposes only and should be used as such by any prospective purchaser. The services, systems and appliances shown have not been tested and no guarantee as to their operability or efficiency can be given.
Made with Metroplan ©2024



Additional information

- Council Tax Band: B
- Energy Efficiency Rating: D

Viewing

Viewing strictly by appointment – details below

Disclaimer

O’Riordan Bond Estate Agents Limited has not tested apparatus, equipment, fittings or services and so cannot verify they are in working order. The buyer is advised to obtain verification from their solicitor or surveyor.

O’Riordan Bond Kingsthorpe Sales
01604 722007

kingsthorpe@oriordanbond.co.uk

