



Birch Barn Way

Kingsthorpe, Northampton

oriordanbond
SALES & LETTINGS



Birch Barn Way

Kingsthorpe
NN2 8DT

Price
£284,995

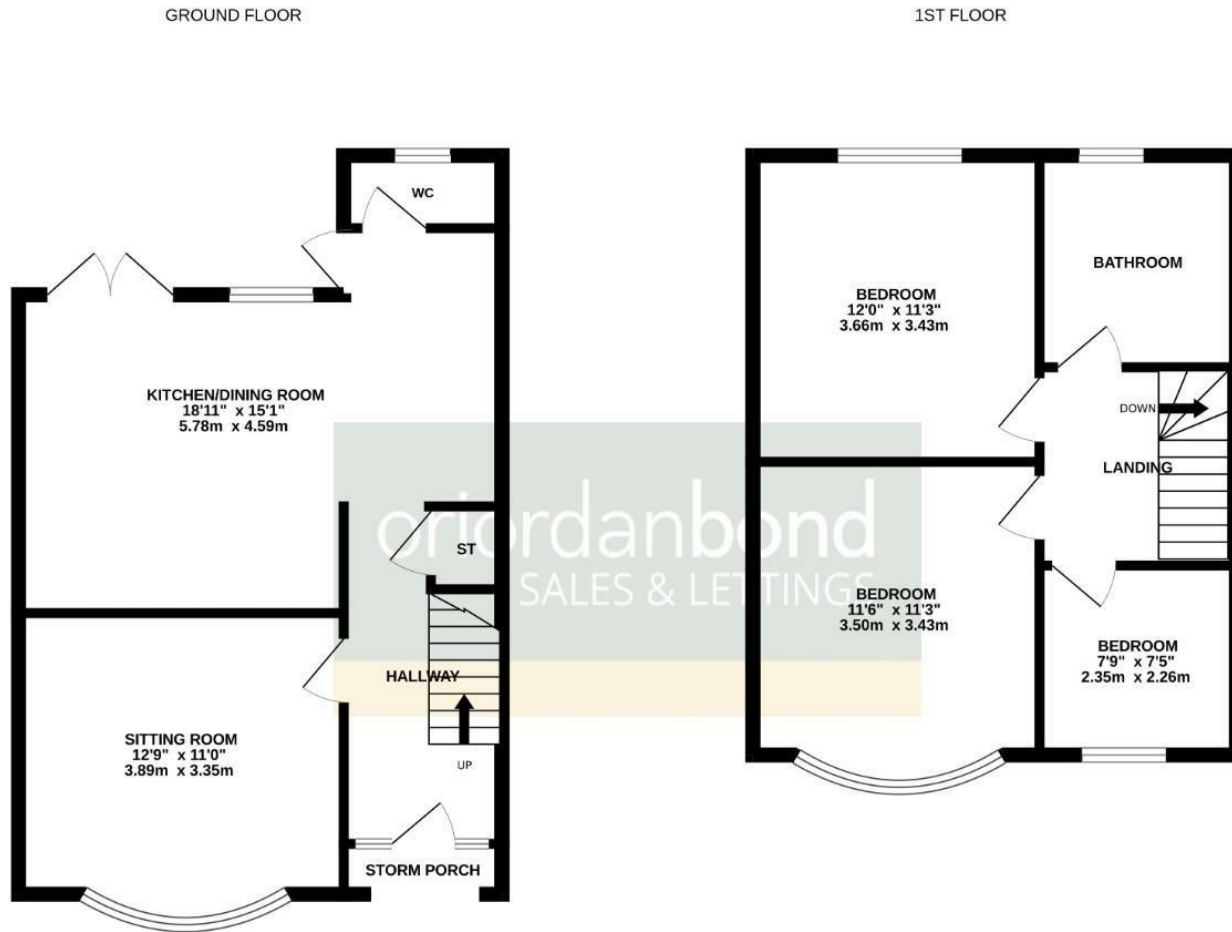
A well presented 1930's double bay fronted three bedroom semi-detached property, situated in the sought after area of Whitehills, within Kingsthorpe. The property is located close by to local amenities and schools.

The accommodation comprises entrance hall, sitting room, open plan kitchen/dining room and cloakroom/WC. To the first floor are three bedrooms with fitted wardrobes, a four-piece family bathroom and access to the loft space. Outside, to the rear is an enclosed garden including decking area, laid to lawn and an outbuilding. Outside to the front is off road parking for at least two vehicles. Further benefits include uPVC double glazing and gas radiator heating. (B/937/M)

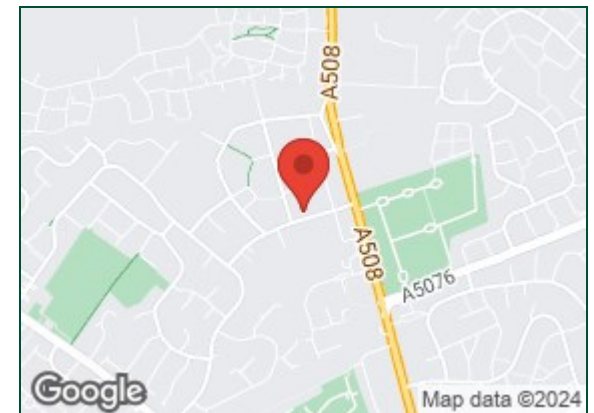
- Three bedroom semi-detached home
- Open plan kitchen/dining room
- Four-piece family bathroom
- Gas radiator heating
- Enclosed rear garden
- Off road parking







TOTAL FLOOR AREA : 937 sq.ft. (87.1 sq.m.) approx.
 Whilst every attempt has been made to ensure the accuracy of the floorplan contained here, measurements of doors, windows, rooms and any other items are approximate and no responsibility is taken for any error, omission or mis-statement. This plan is for illustrative purposes only and should be used as such by any prospective purchaser. The services, systems and appliances shown have not been tested and no guarantee as to their operability or efficiency can be given.
 Made with Metropix ©2024



Additional information

- Council Tax Band: C
- Energy Efficiency Rating: E

Viewing

Viewing strictly by appointment – details below

Disclaimer

O’Riordan Bond Estate Agents Limited has not tested apparatus, equipment, fittings or services and so cannot verify they are in working order. The buyer is advised to obtain verification from their solicitor or surveyor.

O’Riordan Bond Kingsthorpe Sales
 01604 722007

kingsthorpe@oriordanbond.co.uk

