



Northfield Way
Kingsthorpe, Northampton

oriordanbond
SALES & LETTINGS



Northfield Way

Kingsthorpe

NN2 8AN

PRICE £225,000

A modern two bedroom semi-detached home, situated within this popular area of Kingsthorpe. The property provides good access to local schools and amenities.

Accommodation comprises entrance hall, open plan kitchen/living room with French doors opening to the rear garden. From the first floor landing is a three-piece family bathroom and two generous size bedrooms. Outside is an enclosed rear garden being mainly laid to lawn and also providing side access to the property. To the front is allocated off road parking for one vehicle. Further benefits include uPVC double glazing and gas radiator heating. (A/538/S)

Additional information

- Council Tax Band: B
- Energy Efficiency Rating: B

Viewing

Viewing strictly by appointment – details below

Disclaimer

O'Riordan Bond Estate Agents Limited has not tested apparatus, equipment, fittings or services and so cannot verify they are in working order. The buyer is advised to obtain verification from their solicitor or surveyor.

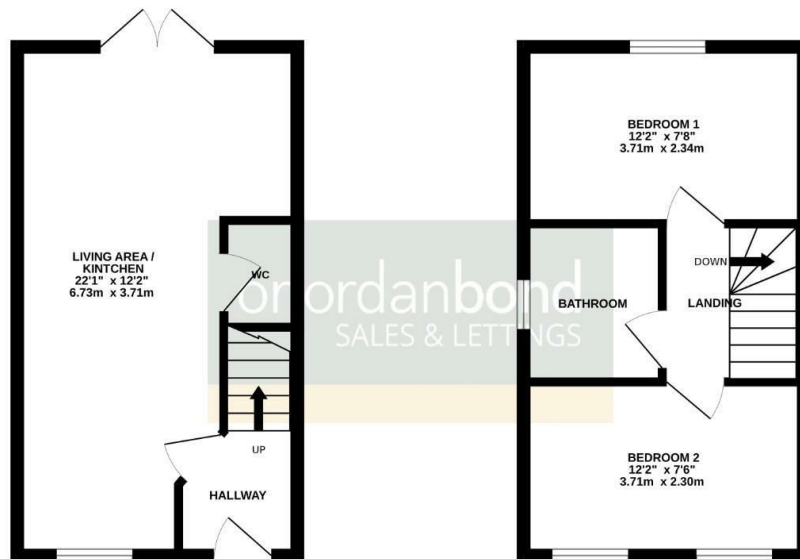
O'Riordan Bond Kingsthorpe Sales
01604 722007

kingsthorpe@oriordanbond.co.uk



GROUND FLOOR
269 sq.ft. (25.0 sq.m.) approx.

1ST FLOOR
269 sq.ft. (25.0 sq.m.) approx.



TOTAL FLOOR AREA : 538 sq.ft. (50.0 sq.m.) approx.

Whilst every attempt has been made to ensure the accuracy of the floorplan contained here, measurements of doors, windows, rooms and any other items are approximate and no responsibility is taken for any error, omission or mis-statement. This plan is for illustrative purposes only and should be used as such by any prospective purchaser. The services, systems and appliances shown have not been tested and no guarantee as to their operability or efficiency can be given.
Made with Merge3D CAD2D