



Flat 10 Park View Court Wallbeck Close

Kingsthorpe, Northampton

oriordanbond
SALES & LETTINGS



Flat 10 Park View Court Wallbeck Close

Kingsthorpe

NN2 8BW

PRICE £180,000

A rarely available three bedroom duplex apartment set in the popular Park View development in Kingsthorpe, just a short walk from local amenities, schools and a bus stop.

Accommodation comprises entrance hall, sitting/dining room with Velux windows, separate fitted kitchen and two double bedrooms serviced by a bathroom suite. To the first floor is the master suite with dressing room and shower ensuite. Outside is a communal garden, allocated carport providing off road parking and bin store. Further benefits include uPVC double glazing and gas radiator heating. (B/788/-)

Leasehold Information: Lease Remaining - 112 years (as of 2024) /
Ground Rent - £300 per annum / Service Charge - £1320 per annum

Additional information

- Council Tax Band: C
- Energy Efficiency Rating: C

Viewing

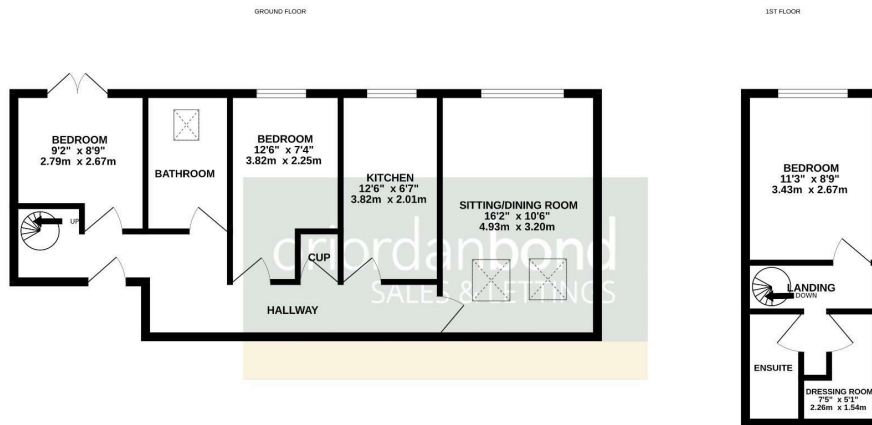
Viewing strictly by appointment – details below

Disclaimer

O'Riordan Bond Estate Agents Limited has not tested apparatus, equipment, fittings or services and so cannot verify they are in working order. The buyer is advised to obtain verification from their solicitor or surveyor.

O'Riordan Bond Kingsthorpe Sales
01604 722007

kingsthorpe@oriordanbond.co.uk



TOTAL FLOOR AREA: 788 sq. ft. (73.2 sq.m.) approx.

Whilst every attempt has been made to ensure the accuracy of the floorplan contained herein, measurements of doors, windows, rooms and any other items are approximate and no responsibility is taken for any error, omission or mis-statement. This plan is for illustrative purposes only and should be used as such by any prospective purchaser. The services, systems and appliances shown have not been tested and no guarantee as to their operability or efficiency can be given.
Made with Metropix ©2024

