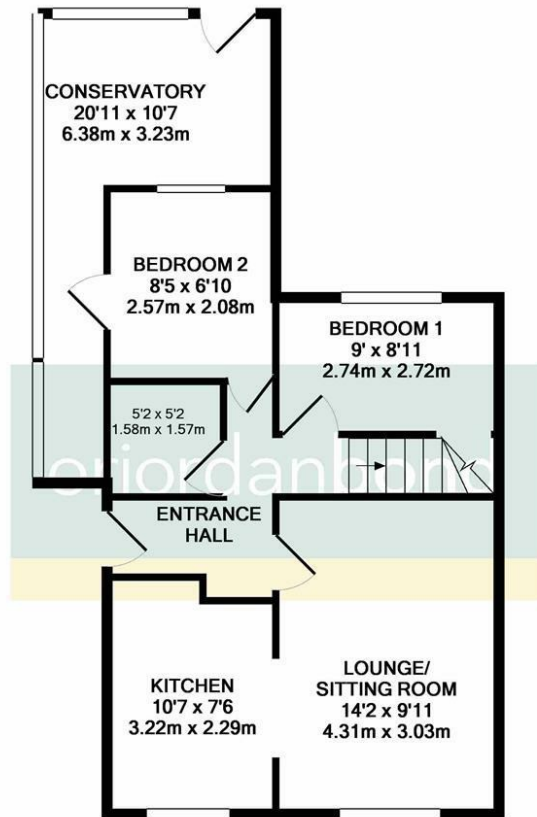




Knights Lane

Kingsthorpe Village, Northampton

oriordanbond
SALES & LETTINGS



TOTAL APPROX. FLOOR AREA 562 SQ.FT. (52.2 SQ.M.)

Whilst every attempt has been made to ensure the accuracy of the floor plan contained here, measurements of doors, windows, rooms and any other items are approximate and no responsibility is taken for any error, omission, or mis-statement. This plan is for illustrative purposes only and should be used as such by any prospective purchaser. The services, systems and appliances shown have not been tested and no guarantee as to their operability or efficiency can be given
 Made with Metropix ©2018

Knights Lane

Kingsthorpe Village

NN2 6QL

GUIDE PRICE £225,000

Offered to the market with no onward chain is this well presented semi-detached bungalow located in popular Kingsthorpe village.

The accommodation comprises entrance hall, sitting room, kitchen, conservatory, three bedrooms and a re-fitted shower room. To the rear is beautifully landscaped garden with large decked area leading to laid lawn and outdoor storage shed/utility, To the front of the property is a driveway providing off road parking for two cars. Further benefits include uPVC double glazing and gas radiator heating. (B/693/M)

Additional information

- Council Tax Band: B
- Energy Efficiency Rating: F

Viewing

Viewing strictly by appointment – details below

Disclaimer

O'Riordan Bond Estate Agents Limited has not tested apparatus, equipment, fittings or services and so cannot verify they are in working order. The buyer is advised to obtain verification from their solicitor or surveyor.

O'Riordan Bond Kingsthorpe Sales

01604 722007

kingsthorpe@oriordanbond.co.uk

