



**Greatmeadow**  
Blackthorn, Northampton

**oriordanbond**  
SALES & LETTINGS





## Greatmeadow

Blackthorn

NN3 8DL

OFFERS OVER £220,000

An immaculately presented three bedroom terraced property, with good access to Weston Favell Shopping Centre and local amenities, situated in the popular Blackthorn area.

The accommodation comprises entrance hall, cloakroom/WC and a re-fitted kitchen/dining room open plan to the sitting room finished to a very high standard with door to the rear garden. To the first floor are three double bedrooms and a modern three-piece bathroom. Outside is low maintenance frontage, a private, enclosed fully landscaped rear garden with patio area and large shed and communal parking. Further benefits include uPVC double glazing and gas radiator heating serviced via a combi boiler. (A/926/M)

### Additional information

- Council Tax Band: A
- Energy Efficiency Rating:

### Viewing

Viewing strictly by appointment – details below

### Disclaimer

O'Riordan Bond Estate Agents Limited has not tested apparatus, equipment, fittings or services and so cannot verify they are in working order. The buyer is advised to obtain verification from their solicitor or surveyor.

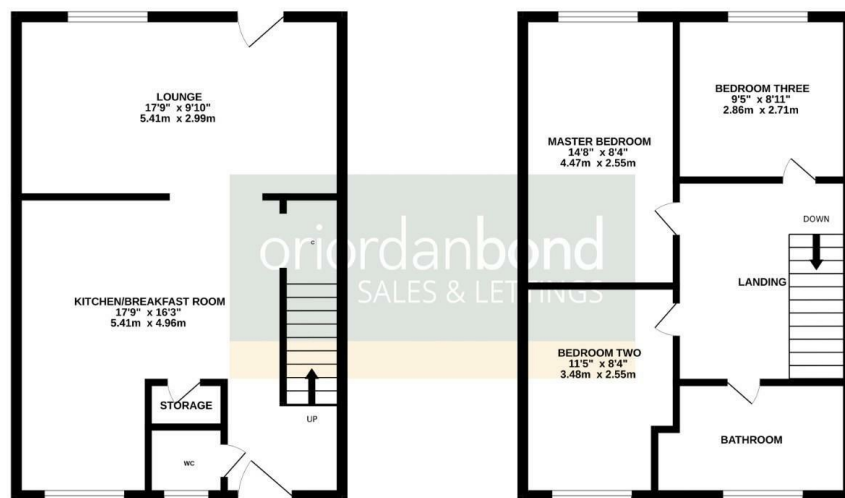
O'Riordan Bond Weston Favell Sales

01604 784007

westonfavell@oriordanbond.co.uk

GROUND FLOOR

1ST FLOOR



TOTAL FLOOR AREA : 926 sq. ft. (86.0 sq. m.) approx.

Whilst every attempt has been made to ensure the accuracy of the floorplan contained here, measurements of doors, windows, rooms and any other items are approximate and no responsibility is taken for any error, omission or mis-statement. This plan is for illustrative purposes only and should be used as such by any prospective purchaser. The services, systems and appliances shown have not been tested and no guarantee as to their operability or efficiency can be given.  
Made with Metropix 02025

