

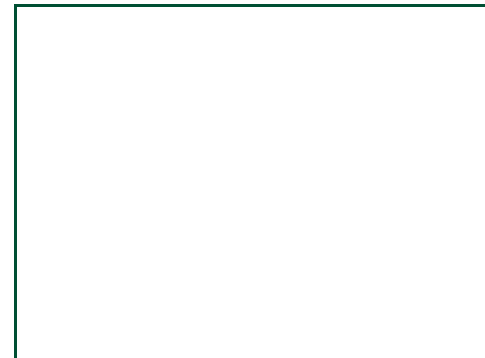
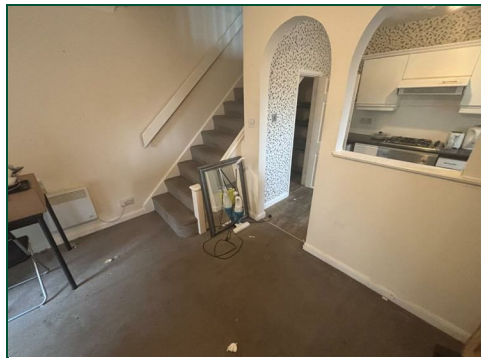


# Wallingford End

Little Billing, Northampton

oriordanbond  
SALES & LETTINGS





## Wallingford End

Little Billing

NN3 9HQ

GUIDE PRICE £140,000

A modern one double bedroom cluster property, situated in a cul-de-sac, within the popular area of Little Billing. The property is offered for sale with no onward chain and ideal for first time buyers.

Accommodation comprises entrance porch, sitting room with archway through to a fitted kitchen, one double bedroom and a three-piece bathroom. Outside is a small front garden and allocated parking. Further benefits include uPVC double glazing and electric heating. (C/473/S)

### Additional information

- Council Tax Band: A
- Energy Efficiency Rating: D

### Viewing

Viewing strictly by appointment – details below

### Disclaimer

O'Riordan Bond Estate Agents Limited has not tested apparatus, equipment, fittings or services and so cannot verify they are in working order. The buyer is advised to obtain verification from their solicitor or surveyor.

O'Riordan Bond Weston Favell Sales  
01604 784007

westonfavell@oriordanbond.co.uk



GROUND FLOOR

1ST FLOOR



TOTAL FLOOR AREA - 473sq. ft. (43.9 sq.m.) approx.

Whilst every attempt has been made to ensure the accuracy of the floorplan contained here, measurements of doors, windows, rooms and any other items are approximate and no responsibility is taken for any error, omission or mis-statement. This plan is for illustrative purposes only and should be used as such by any prospective purchaser. The services, systems and appliances shown have not been tested and no guarantee as to their operability or efficiency can be given.  
Made with Metreage 02025