



Mortar Pit Road

Rectory Farm, Northampton

oriordanbond
SALES & LETTINGS



Mortar Pit Road

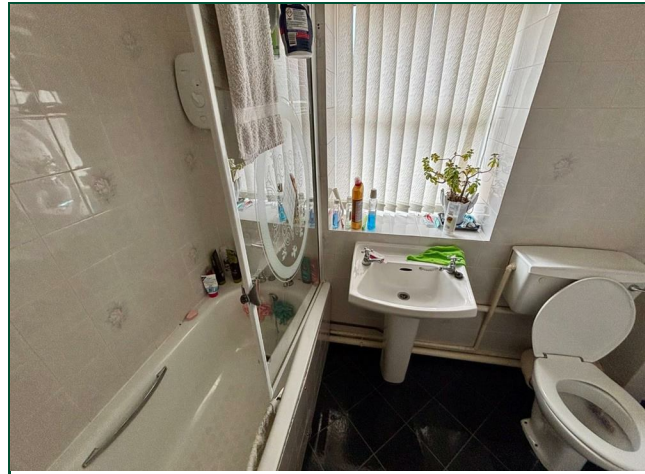
Rectory Farm
NN3 5BL

Price
£240,000

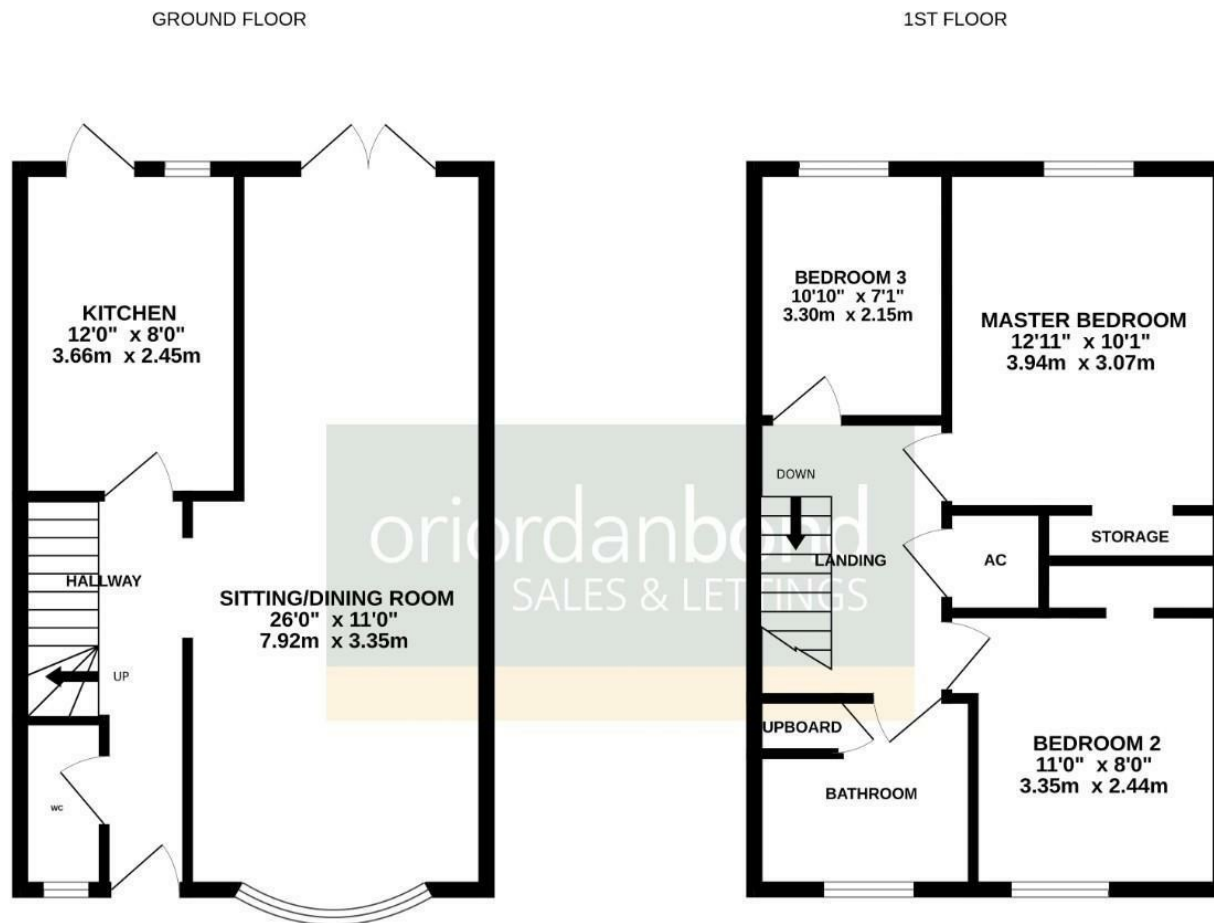
A modern three bedroom end terraced property located in the popular location of Rectory Farm. The property provides good size living accommodation and provides good access to local amenities and schooling.

The accommodation comprises entrance hall, cloakroom/WC, 26' sitting/dining room and kitchen. To the first floor are three good size bedrooms and a newly fitted family bathroom. Outside is an enclosed rear garden with lawn and paved patio area, an open plan lawned front garden and private driveway with side access. Further benefits include uPVC double glazing and gas radiator heating. (B/909/M)

- Modern three bedroom end terraced house
- 26' sitting/dining room
- Newly fitted family bathroom
- Gas radiator heating
- Enclosed rear garden
- Off road parking



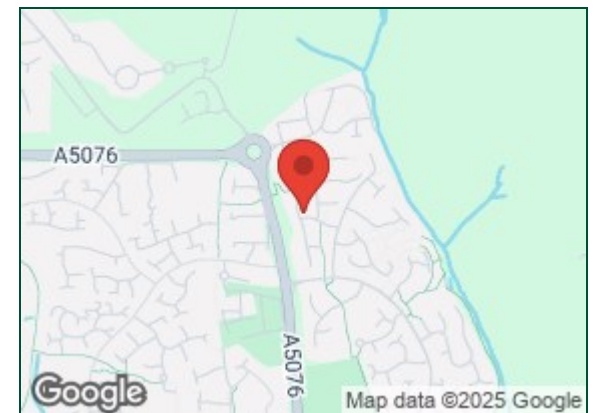




TOTAL FLOOR AREA : 909 sq.ft. (84.4 sq.m.) approx.

Whilst every attempt has been made to ensure the accuracy of the floorplan contained here, measurements of doors, windows, rooms and any other items are approximate and no responsibility is taken for any error, omission or mis-statement. This plan is for illustrative purposes only and should be used as such by any prospective purchaser. The services, systems and appliances shown have not been tested and no guarantee as to their operability or efficiency can be given.

Made with Metropix ©2025



Additional information

- Council Tax Band: B
- Energy Efficiency Rating: D

Viewing

Viewing strictly by appointment – details below

Disclaimer

O'Riordan Bond Estate Agents Limited has not tested apparatus, equipment, fittings or services and so cannot verify they are in working order. The buyer is advised to obtain verification from their solicitor or surveyor.

O'Riordan Bond Weston Favell Sales
01604 784007

westonfavell@oriordanbond.co.uk

