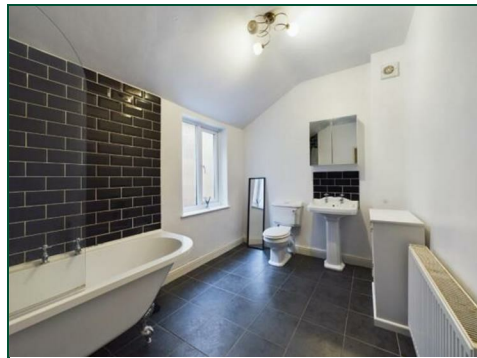




Florence Road

Abington, Northampton

oriordanbond
LETTINGS



Florence Road

Abington

NN1 4NA

£1,250 PCM

An immaculate two bedroom Victorian terrace located in the heart of Abington close by to local restaurants and bars and in walking distance to Abington Park and Northampton General Hospital. The property accommodation comprises entrance, entrance hall, lounge, dining room and refitted kitchen with Quartz work tops and built in appliances. The first floor provides a modern bathroom and two double bedrooms. Further benefits includes uPVC double glazed windows, a cellar, enclosed rear garden and modern heating system.

Tenancy Information

- Deposit: £1442.30 (1 Week Holding Deposit - £288.46)
- Smokers: Not Allowed
- Unfurnished
- Length of Tenancy: 12 Months
- Available: End of May 2025

Additional information

- Council Tax Band: B
- Energy Efficiency Rating: D

Viewing

Viewing strictly by appointment – details below

Disclaimer

O'Riordan Bond Estate Agents Limited has not tested apparatus, equipment, fittings or services and so cannot verify they are in working order. The buyer is advised to obtain verification from their solicitor or surveyor.

O'Riordan Bond Weston Favell Lettings

01604 814400

lettingswestonfavell@oriordanbond.co.uk

