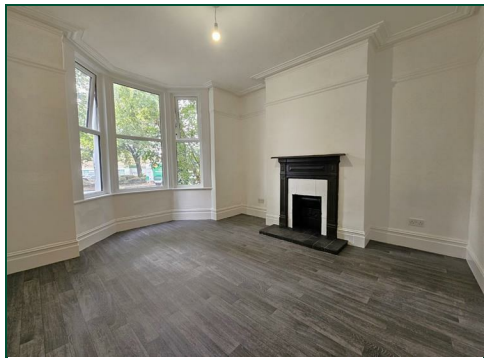




# Victoria Promenade

Town Centre, Northampton

oriordanbond  
LETTINGS



## Victoria Promenade

Town Centre

NN1 1HH

£1,175 PCM

A double bay fronted three bedroom Victorian terraced home located within walking distance to all amenities including Northampton town centre, train station and General Hospital. The accommodation comprises entrance hall with stairs to first floor, separate living room with bay window to front elevation, dining room with French patio doors leading to rear garden and fitted kitchen. On the first floor are three double bedrooms, the master having bay window to front elevation, and a family bathroom with shower over bath. Further benefits include uPVC double glazing, gas radiator heating and a rear garden.

### Tenancy Information

- Deposit: £1355.76 (1 Week Holding Deposit - £271.15)
- Smokers: Not Allowed
- Unfurnished
- Length of Tenancy: 12 Months with the option to extend
- Available: Early May 2025

### Additional information

- Council Tax Band: B
- Energy Efficiency Rating: D

### Viewing

Viewing strictly by appointment – details below

### Disclaimer

O'Riordan Bond Estate Agents Limited has not tested apparatus, equipment, fittings or services and so cannot verify they are in working order. The buyer is advised to obtain verification from their solicitor or surveyor.

O'Riordan Bond Weston Favell Lettings

01604 814400

lettingswestonfavell@oriordanbond.co.uk

