



Thornfield

Cherry Lodge, Northampton

oriordanbond
SALES & LETTINGS



Thornfield

Cherry Lodge
NN3 8QR

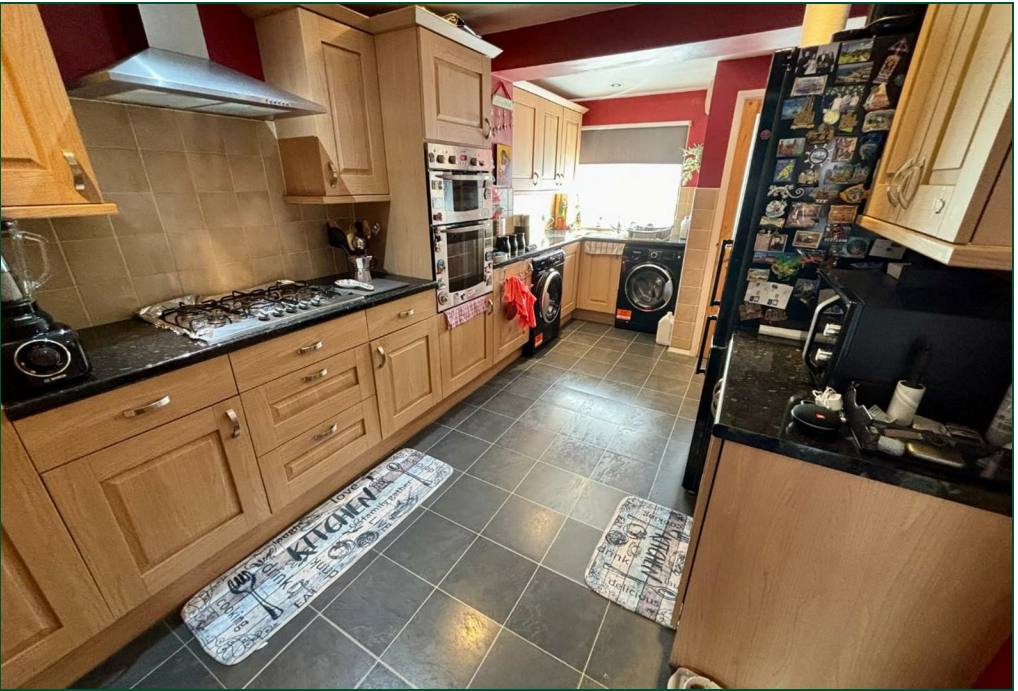
Guide Price
£269,500

An extended and well presented three/four bedroom semi-detached home situated in this popular location. The property provides good access to local schools including Northampton Academy and Weston Favell Shopping Centre.

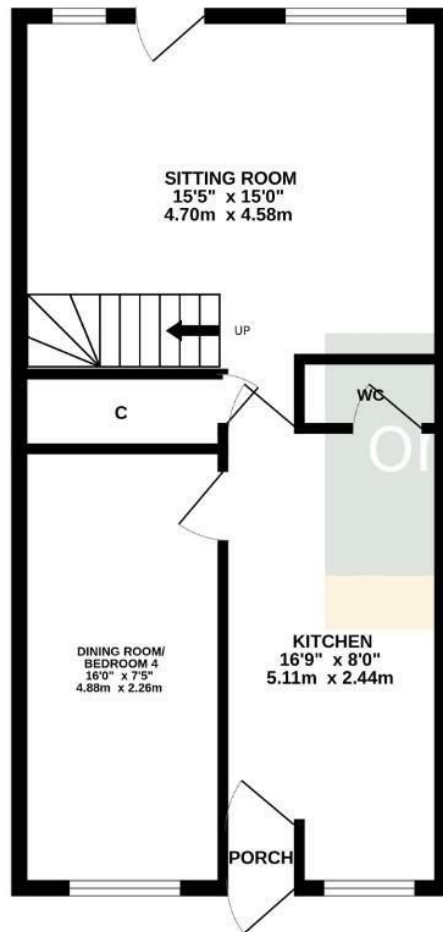
The accommodation comprises entrance porch, re-fitted kitchen, sitting room, dining room/bedroom four and a cloakroom/WC. The first floor offers three bedrooms and a newly re-fitted three-piece shower room. Outside is an enclosed low maintenance rear garden and a block paved driveway to the front providing off road parking for two vehicles. Further benefits include gas radiator heating, uPVC double glazing and fitted solar panels. (B/939/M)

- Three/four bedroom semi-detached house
- Re-fitted kitchen
- Re-fitted shower room
- Gas radiator heating
- Low maintenance rear garden
- Off road parking

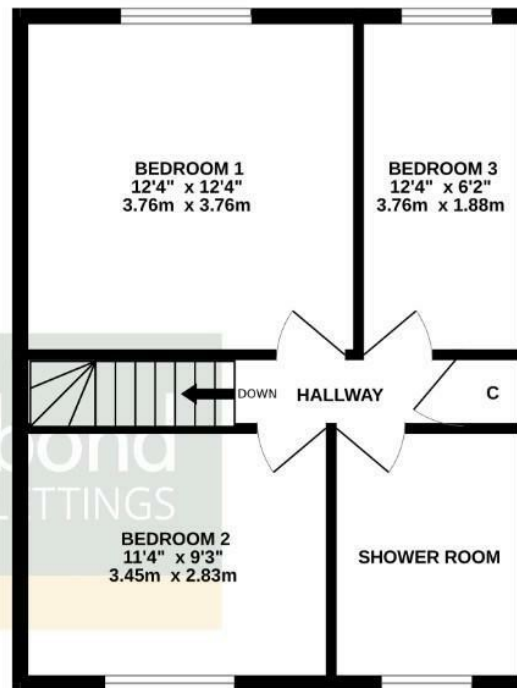




GROUND FLOOR



1ST FLOOR



TOTAL FLOOR AREA : 939 sq.ft. (87.2 sq.m.) approx.

Whilst every attempt has been made to ensure the accuracy of the floorplan contained here, measurements of doors, windows, rooms and any other items are approximate and no responsibility is taken for any error, omission or mis-statement. This plan is for illustrative purposes only and should be used as such by any prospective purchaser. The services, systems and appliances shown have not been tested and no guarantee as to their operability or efficiency can be given.
Made with Metropix ©2025



Additional information

- Council Tax Band: B
- Energy Efficiency Rating: B

Viewing

Viewing strictly by appointment – details below

Disclaimer

O'Riordan Bond Estate Agents Limited has not tested apparatus, equipment, fittings or services and so cannot verify they are in working order. The buyer is advised to obtain verification from their solicitor or surveyor.

O'Riordan Bond Weston Favell Sales
01604 784007

westonfavell@oriordanbond.co.uk

