



159 - 161

159

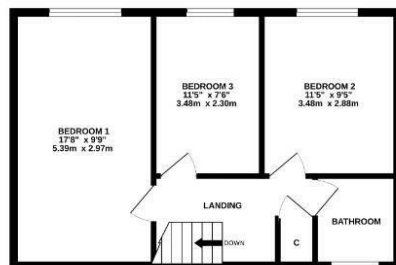
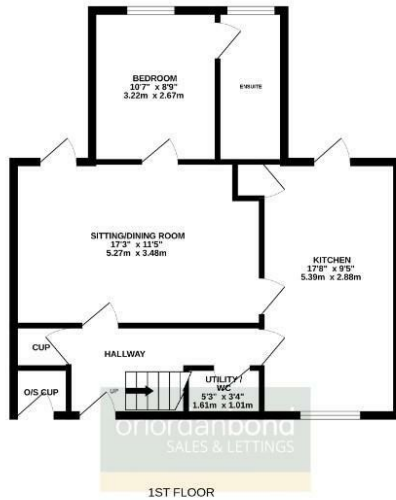
oriordanbond
FOR SALE
01604 784 007

Greatmeadow
Blackthorn, Northampton

oriordanbond
SALES & LETTINGS



GROUND FLOOR



TOTAL FLOOR AREA - 944 sq.ft. (87.7 sq.m.) approx.

Whilst every attempt has been made to ensure the accuracy of the floorplan contained here, measurements of doors, windows, rooms and any other items are approximate and no responsibility is taken for any error, omission or mis-statement. This plan is for illustrative purposes only and should be used as such by any prospective purchaser. The services, systems and appliances shown have not been tested and no guarantee as to their operability or efficiency can be given.
 Made with Metagix ©2008

Greatmeadow

Blackthorn

NN3 8DJ

PRICE £220,000

A four bedroom end terrace property with two bathrooms situated in the popular area of Blackthorn. Offered to the market with no onward chain, the property provides good access to local amenities and local schools.

The accommodation comprises entrance hall, cloakroom/WC, sitting room, kitchen/dining room and a ground floor double bedroom with en-suite bathroom. The first floor offers a further three double bedrooms and a three-piece family bathroom. Externally there is a low maintenance rear garden and communal parking. Further benefits include gas radiator heating and double glazing. (C/964/S)

Additional information

- Council Tax Band: A
- Energy Efficiency Rating: D

Viewing

Viewing strictly by appointment – details below

Disclaimer

O'Riordan Bond Estate Agents Limited has not tested apparatus, equipment, fittings or services and so cannot verify they are in working order. The buyer is advised to obtain verification from their solicitor or surveyor.

O'Riordan Bond Weston Favell Sales

01604 784007

westonfavell@oriordanbond.co.uk

