



Manorfield Close

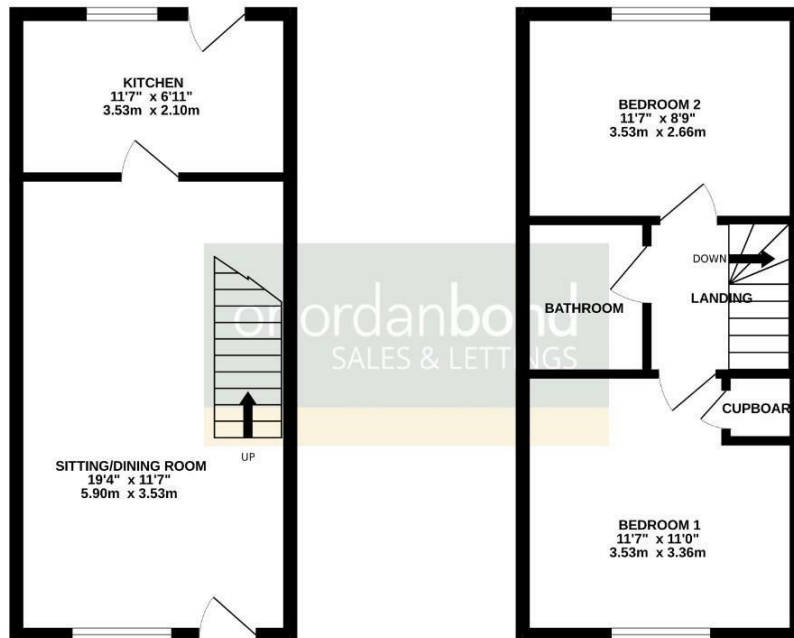
Little Billing, Northampton

oriordanbond
SALES & LETTINGS



GROUND FLOOR

1ST FLOOR



TOTAL FLOOR AREA : 608 sq ft. (56.5 sq m.) approx.

Whilst every attempt has been made to ensure the accuracy of the description contained herein, measurements of doors, windows, rooms and any other items are approximate and no responsibility is taken for any error, omission or mis-statement. This plan is for guidance purposes only and should be used as such by any prospective purchaser. The services, systems and appliances shown have not been tested and no guarantee is given as to their operability or efficiency over the given period.

Made with Metacax 02024

Manorfield Close

Little Billing

NN3 9SP

PRICE £180,000

A two bedroom semi-detached property, situated in a cul-de-sac location, within the popular area of Little Billing. Offered for sale with no onward chain, the property is currently in need of modernisation throughout.

The accommodation comprises entrance into sitting/dining room, kitchen with door to the rear garden, first floor landing, two double bedrooms and a bathroom. Outside is an open plan front garden with driveway to the side leading to a single garage and an enclosed garden to the rear. Further benefits include uPVC double glazing. (C/608/M)

Additional information

- Council Tax Band: B
- Energy Efficiency Rating: F

Viewing

Viewing strictly by appointment – details below

Disclaimer

O'Riordan Bond Estate Agents Limited has not tested apparatus, equipment, fittings or services and so cannot verify they are in working order. The buyer is advised to obtain verification from their solicitor or surveyor.

O'Riordan Bond Weston Favell Sales

01604 784007

westonfavell@oriordanbond.co.uk

