



Morgan Close

Rectory Farm, Northampton

oriordanbond
LETTINGS



Morgan Close

Rectory Farm
NN3 5JH

£950 PCM

A beautifully presented two bedroom semi-detached home located in the popular location of Rectory Farm. Accommodation comprises entrance hall, sitting room, re-fitted kitchen/dining room, two bedrooms and a re-fitted bathroom. Outside are front and rear gardens and off road parking. Further benefits include uPVC double glazing and gas radiator heating. Pets considered

Tenancy Information

- Deposit: £1,096.00 (1 Week Holding Deposit - £219.00)
- Smokers: Not Allowed
- Unfurnished
- Length of Tenancy: 12 Months
- Available: 1st October 2024

Additional information

- Council Tax Band: B
- Energy Efficiency Rating: E

Viewing

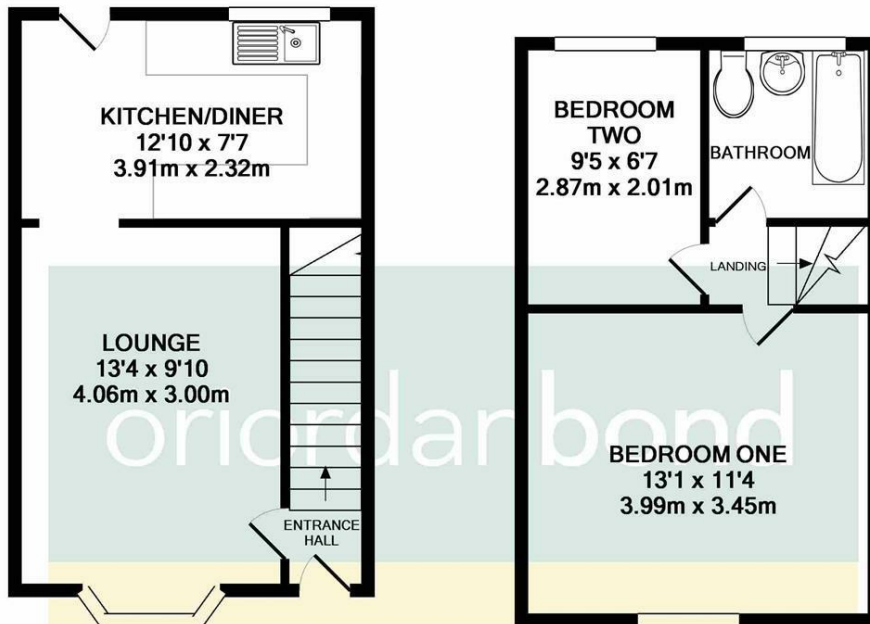
Viewing strictly by appointment – details below

Disclaimer

O’Riordan Bond Estate Agents Limited has not tested apparatus, equipment, fittings or services and so cannot verify they are in working order. The buyer is advised to obtain verification from their solicitor or surveyor.

O’Riordan Bond Weston Favell Lettings
01604 814400

lettingswestonfavell@oriordanbond.co.uk



GROUND FLOOR

1ST FLOOR

TOTAL APPROX. FLOOR AREA 600 SQ.FT. (55.7 SQ.M.)

Whilst every attempt has been made to ensure the accuracy of the floor plan contained here, measurements of doors, windows, rooms and any other items are approximate and no responsibility is taken for any error, omission, or mis-statement. This plan is for illustrative purposes only and should be used as such by any prospective purchaser. The services, systems and appliances shown have not been tested and no guarantee as to their operability or efficiency can be given
Made with Metropix ©2018