



**Greatmeadow**  
Blackthorn, Northampton

**oriordanbond**  
SALES & LETTINGS



## Greatmeadow

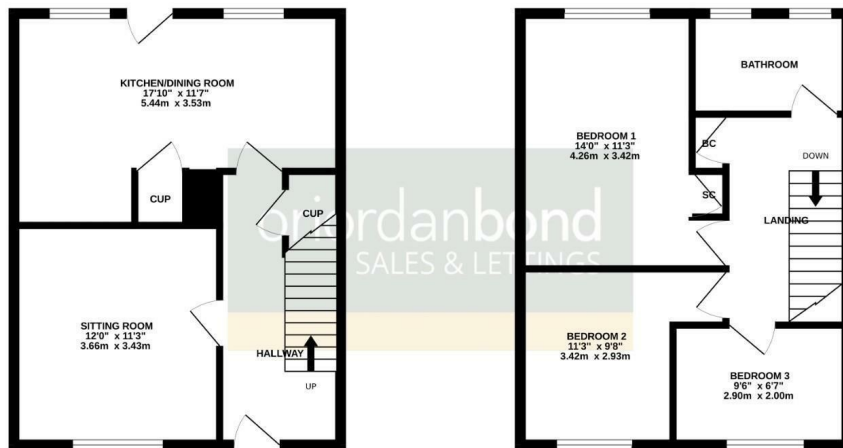
Blackthorn

NN3 8DF

OFFERS OVER £205,000

GROUND FLOOR

1ST FLOOR



TOTAL FLOOR AREA: 837 sq.ft. (77.8 sq.m.) approx.

Whilst every attempt has been made to ensure the accuracy of the floorplan contained here, measurements of doors, windows, rooms and any other items are approximate and no responsibility is taken for any error, omission or mis-statement. This plan is for illustrative purposes only and should be used as such by any prospective purchaser. The services, systems and appliances shown have not been tested and no guarantee as to their operability or efficiency can be given.  
Made with Metropix 02024

A three bedroom terraced property, situated in the popular Blackthorn area, offered to the market with no onward chain. The property provides good access to local schools, Weston Favell Shopping Centre and the A45.

The accommodation is presented in immaculate condition and comprises entrance hall, sitting room, re-fitted kitchen/dining room, three first floor bedrooms and a re-fitted family bathroom. Outside is a low maintenance front garden, an enclosed garden to the rear and communal parking. Further benefits include uPVC double glazing and gas radiator heating. (A/837/S)

### Additional information

- Council Tax Band: A
- Energy Efficiency Rating: C

### Viewing

Viewing strictly by appointment – details below

### Disclaimer

O'Riordan Bond Estate Agents Limited has not tested apparatus, equipment, fittings or services and so cannot verify they are in working order. The buyer is advised to obtain verification from their solicitor or surveyor.

O'Riordan Bond Weston Favell Sales  
01604 784007

westonfavell@oriordanbond.co.uk

