



Hamsterly Park

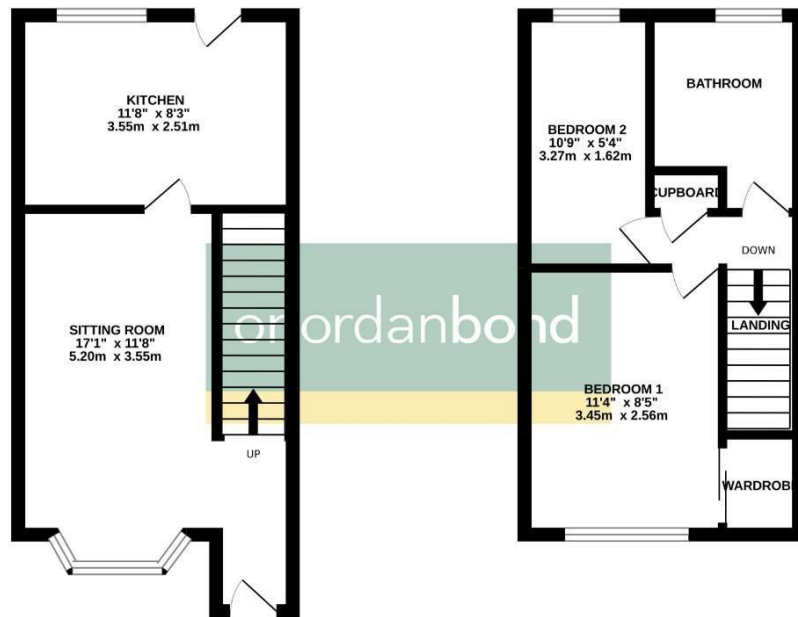
Southfields, Northamptonshire

oriordanbond
SALES & LETTINGS



GROUND FLOOR

1ST FLOOR



TOTAL FLOOR AREA : 531 sq.ft. (49.3 sq.m.) approx.
 Whilst every attempt has been made to ensure the accuracy of the floorplan contained here, measurements of doors, windows, floors and any other items are approximate and no responsibility is taken for any error, omission or mis-statement. This plan is for illustrative purposes only and should be used as such by any prospective purchaser. The services, systems and appliances shown have not been tested and no guarantee as to their operability or efficiency can be given.
 Made with Metshape 02/22

Hamsterly Park

Southfields

NN3 5DA

OFFERS OVER £190,000

A well maintained modern two bedroom end of terrace property situated in this popular area within Southfields. Offered for sale with no onward chain.

The accommodation comprises entrance porch, sitting room, kitchen/dining room, two bedrooms and a family bathroom. Outside are gardens to the front and rear and allocated parking. Further benefits include sealed unit double glazing and gas radiator heating. (B/531/S)

Additional information

- Council Tax Band: B
- Energy Efficiency Rating: C

Viewing

Viewing strictly by appointment – details below

Disclaimer

O'Riordan Bond Estate Agents Limited has not tested apparatus, equipment, fittings or services and so cannot verify they are in working order. The buyer is advised to obtain verification from their solicitor or surveyor.

O'Riordan Bond Weston Favell Sales

01604 784007

westonfavell@oriordanbond.co.uk

