



**Beaumont Drive**  
Cherry Lodge, Northampton

**oriordanbond**  
SALES & LETTINGS





## Beaumont Drive

Cherry Lodge  
NN3 8PS

Offers Over  
£350,000

An immaculately presented four bedroom detached family home, situated on a corner plot, offering great size living accommodation with off road parking and single garage. This home must be viewed to be appreciated and has been thoughtfully improved throughout by the current owners.

Accommodation comprises entrance hall, cloakroom/WC, full length sitting room with bay window, a newly fitted modern kitchen with integrated NEFF appliances and a huge range of storage. Additionally to the ground floor is a separate large dining room with French doors leading to the rear garden. To the first floor are four fantastic size bedrooms with fitted wardrobes to the master and a newly fitted shower room finished to an extremely high standard. Externally are front, side and rear gardens all very well maintained with mature plants and shrubs, driveway providing off road parking and a single garage. Further benefits include a newly fitted boiler, newly fitted front door and uPVC double glazing. (A/1231/M)

- Immaculately presented four bedroom detached home
- Two reception rooms
- Kitchen with integrated NEFF appliances
- Newly fitted shower room
- Gardens to three aspects
- Driveway and garage

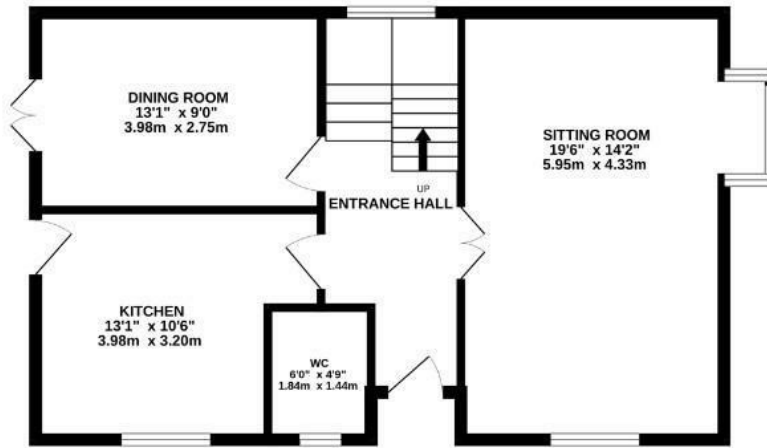




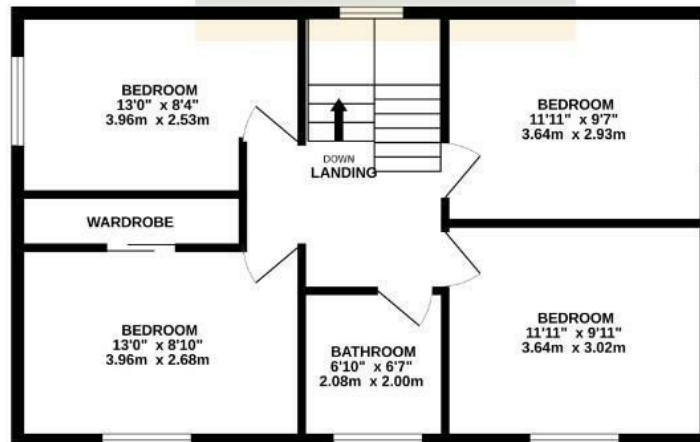




GROUND FLOOR

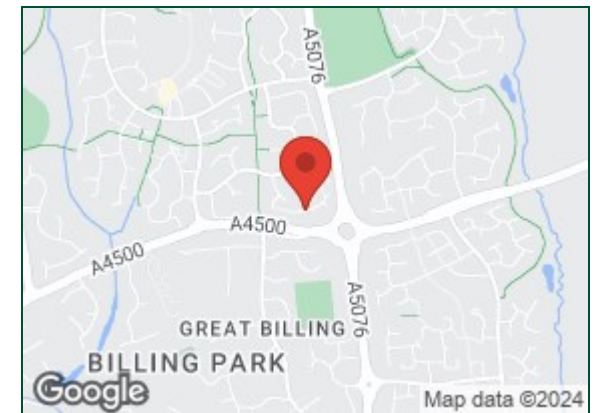


oriordanbond  
SALES & LETTINGS



TOTAL FLOOR AREA : 1231 sq.ft. (114.4 sq.m.) approx.

Whilst every attempt has been made to ensure the accuracy of the floorplan contained here, measurements of doors, windows, rooms and any other items are approximate and no responsibility is taken for any error, omission or mis-statement. This plan is for illustrative purposes only and should be used as such by any prospective purchaser. The services, systems and appliances shown have not been tested and no guarantee as to their operability or efficiency can be given.  
Made with Metropix ©2024



Additional information

- Council Tax Band: D
- Energy Efficiency Rating: D

Viewing

Viewing strictly by appointment – details below

Disclaimer

O'Riordan Bond Estate Agents Limited has not tested apparatus, equipment, fittings or services and so cannot verify they are in working order. The buyer is advised to obtain verification from their solicitor or surveyor.

O'Riordan Bond Weston Favell Sales  
01604 784007

westonfavell@oriordanbond.co.uk

