

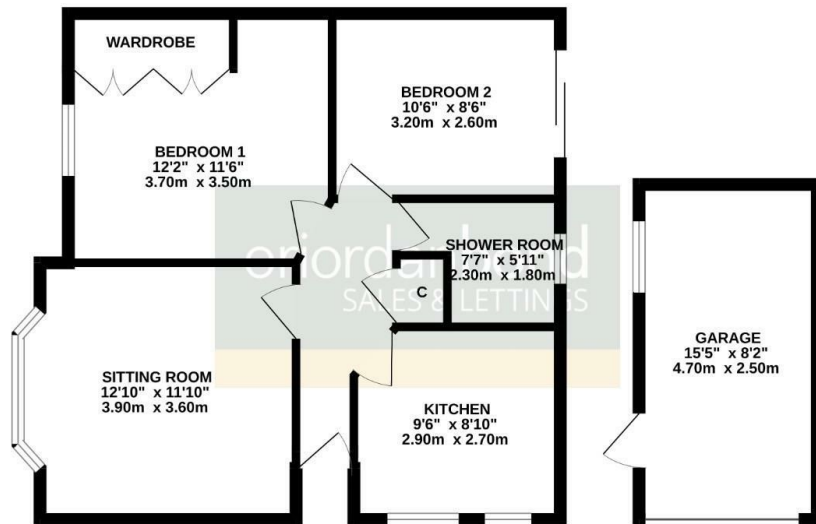


Landsdown Drive
Westone, Northampton

oriordanbond
SALES & LETTINGS



GROUND FLOOR
627 sq.ft. (58.2 sq.m.) approx.



TOTAL FLOOR AREA: 627 sq.ft. (58.2 sq.m.) approx.
Whilst every attempt has been made to ensure the accuracy of the floorplan contained here, measurements of doors, windows, rooms and any other items are approximate and no responsibility is taken for any error, omission or mis-statement. This plan is for illustrative purposes only and should be used as such by any prospective purchaser. The services, systems and appliances shown have not been tested and no guarantee as to their operability or efficiency can be given.
Made with Metropix ©2024

Landsdown Drive

Westone
NN3 3ED

OFFERS OVER £270,000

A well presented semi-detached bungalow situated in the ever popular Westone estate. The property is offered to the market with no onward chain.

Accommodation comprises entrance hall, lounge/dining room, re-fitted kitchen, two bedrooms and a bathroom. Outside are front and rear gardens and a driveway providing off road parking leading to a single garage. Further benefits include gas radiator heating and uPVC double glazing. (B/627/S)

Additional information

- Council Tax Band: C
- Energy Efficiency Rating: C

Viewing

Viewing strictly by appointment – details below

Disclaimer

O'Riordan Bond Estate Agents Limited has not tested apparatus, equipment, fittings or services and so cannot verify they are in working order. The buyer is advised to obtain verification from their solicitor or surveyor.

O'Riordan Bond Weston Favell Sales
01604 784007

westonfavell@oriordanbond.co.uk

