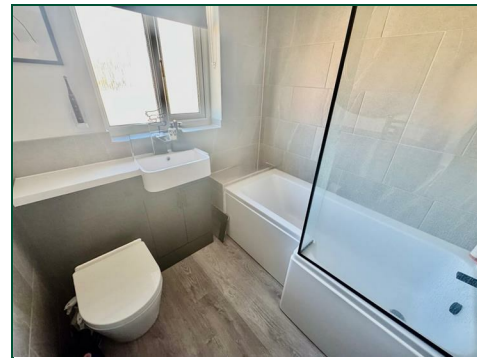




King Edward Road

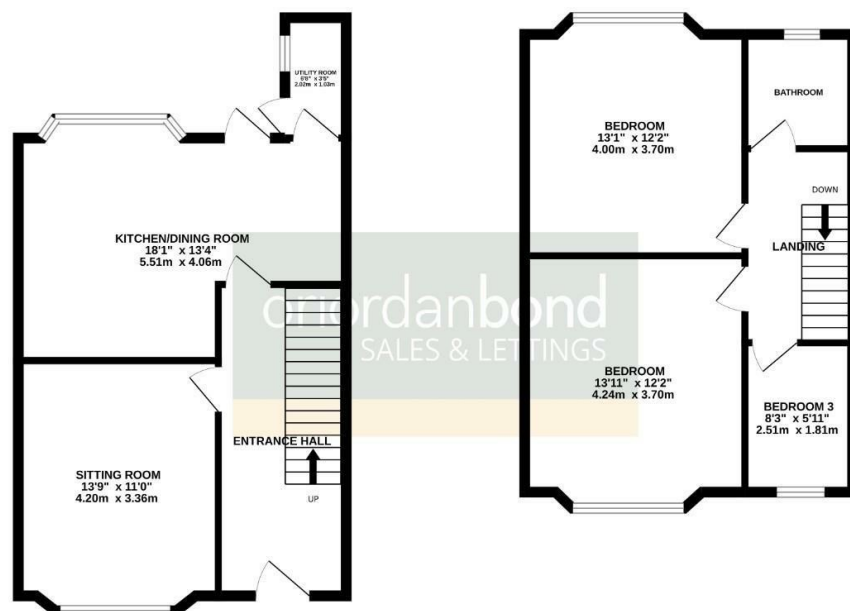
Abington, Northampton

oriordanbond
SALES & LETTINGS



GROUND FLOOR

1ST FLOOR



TOTAL FLOOR AREA : 961 sq.ft. (89.3 sq.m.) approx.

While every attempt has been made to ensure the accuracy of the floorplan contained here, measurements of doors, windows, rooms and any other items are approximate and no responsibility is taken for any error, omission or mis-statement. This plan is for illustrative purposes only and should be used as such by any prospective purchaser. The services, systems and appliances shown have not been tested and no guarantee as to their operability or efficiency can be given.
Made with Metreplan CS2020

King Edward Road

Abington

NN1 5LY

PRICE £315,000

A fully refurbished three bedroom Edwardian terraced property situated in this prime location within short walking distance of Abington Park. The property is offered for sale in superb condition throughout and has the added benefit of a garage to the rear.

The accommodation comprises entrance hall, sitting room, a re-fitted open plan kitchen/dining room with utility off and a cellar. To the first floor are three bedrooms and a re-fitted family bathroom. Outside are front and rear gardens and a garage accessed via a rear service road. Further benefits include gas radiator heating and uPVC double glazing. (A/961/M)

Additional information

- Council Tax Band: C
- Energy Efficiency Rating: C

Viewing

Viewing strictly by appointment – details below

Disclaimer

O'Riordan Bond Estate Agents Limited has not tested apparatus, equipment, fittings or services and so cannot verify they are in working order. The buyer is advised to obtain verification from their solicitor or surveyor.

O'Riordan Bond Abington Sales

01604 639007

abington@oriordanbond.co.uk

