



Milton Street

Poets Corner, Northampton

oriordanbond
SALES & LETTINGS



Milton Street

Poets Corner
NN2 7JF

Offers Over
£225,000

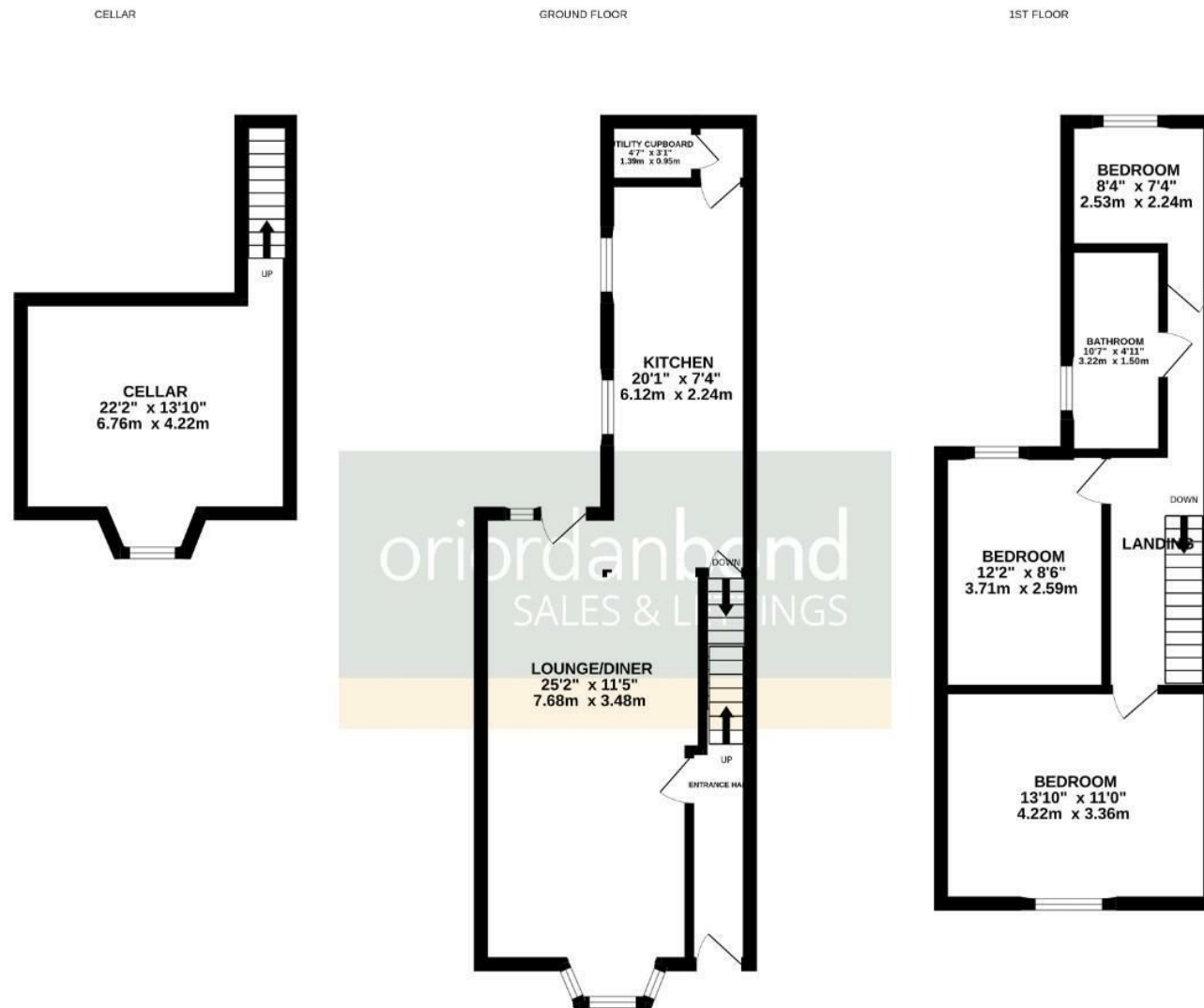
O'Riordan Bond is delighted to offer for sale this two/three bedroom bay fronted Victorian terraced home offered to market in great condition throughout. The property is located in the popular area of Poets Corner within sought after Kingsley.

The accommodation comprises entrance hall, sitting room open to dining room, a modern refitted kitchen, two double bedrooms, a third bedroom/study and a re-fitted family bathroom. Outside is a large garden to the rear laid mainly to lawn. Further benefits include a cellar, uPVC double glazing and gas radiator heating. (A/1109/L)

- Two/three bedroom Victorian terraced home
- Open plan sitting/dining room
- Re-fitted kitchen
- Cellar
- Gas radiator heating
- Large rear garden

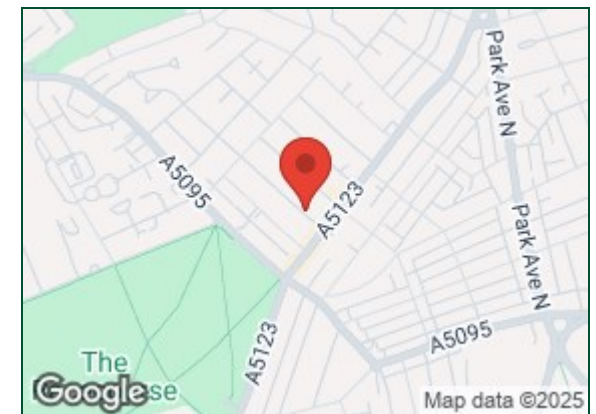






TOTAL FLOOR AREA : 1109 sq.ft. (103.0 sq.m.) approx.

Whilst every attempt has been made to ensure the accuracy of the floorplan contained here, measurements of doors, windows, rooms and any other items are approximate and no responsibility is taken for any error, omission or mis-statement. This plan is for illustrative purposes only and should be used as such by any prospective purchaser. The services, systems and appliances shown have not been tested and no guarantee as to their operability or efficiency can be given.
Made with Metropix ©2025



Additional information

- Council Tax Band: B
- Energy Efficiency Rating: D

Viewing

Viewing strictly by appointment – details below

Disclaimer

O'Riordan Bond Estate Agents Limited has not tested apparatus, equipment, fittings or services and so cannot verify they are in working order. The buyer is advised to obtain verification from their solicitor or surveyor.

O'Riordan Bond Abington Sales
01604 639007

abington@oriordanbond.co.uk

