

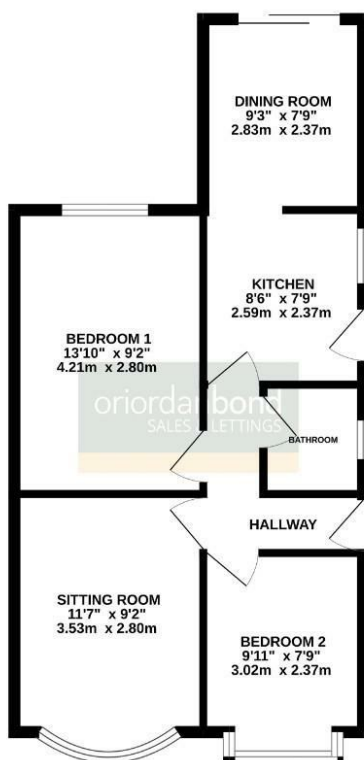


Maselfield Way
Kinglsey, Northampton

oriordanbond
SALES & LETTINGS



GROUND FLOOR
515 sq.ft. (47.8 sq.m.) approx.



TOTAL FLOOR AREA : 515 sq.ft. (47.8 sq.m.) approx.

Whilst every attempt has been made to ensure the accuracy of the floorplan contained here, measurements of doors, windows, rooms and any other items are approximate and no responsibility is taken for any error, omission or mis-statement. This plan is for illustrative purposes only and should be used as such by any prospective purchaser. The services, systems and appliances shown have not been tested and no guarantee as to their operability or efficiency can be given.
Made with Metagor C5025

Masefield Way

Kinglsey

NN2 7JU

PRICE £220,000

A two bedroom semi-detached bungalow, situated in the sought after Kingsley area, offered for sale with no onward chain. The property is located within close proximity to The Racecourse, local amenities and provides good access to Abington Park.

The accommodation comprises entrance hall, bay fronted sitting room, dining room, kitchen, two double bedrooms and a fitted shower room. Outside is a rear garden with lawn and patio areas and a driveway to the front providing off road parking for two cars. Further benefits include uPVC double glazing and gas radiator heating. (B/515/M)

Additional information

- Council Tax Band: B
- Energy Efficiency Rating: D

Viewing

Viewing strictly by appointment – details below

Disclaimer

O'Riordan Bond Estate Agents Limited has not tested apparatus, equipment, fittings or services and so cannot verify they are in working order. The buyer is advised to obtain verification from their solicitor or surveyor.

O'Riordan Bond Abington Sales

01604 639007

abington@oriordanbond.co.uk

