



The Vale

Phippsville, Northampton

oriordanbond
SALES & LETTINGS



The Vale

Phippsville
NN1 4ST

Guide Price
£325,000

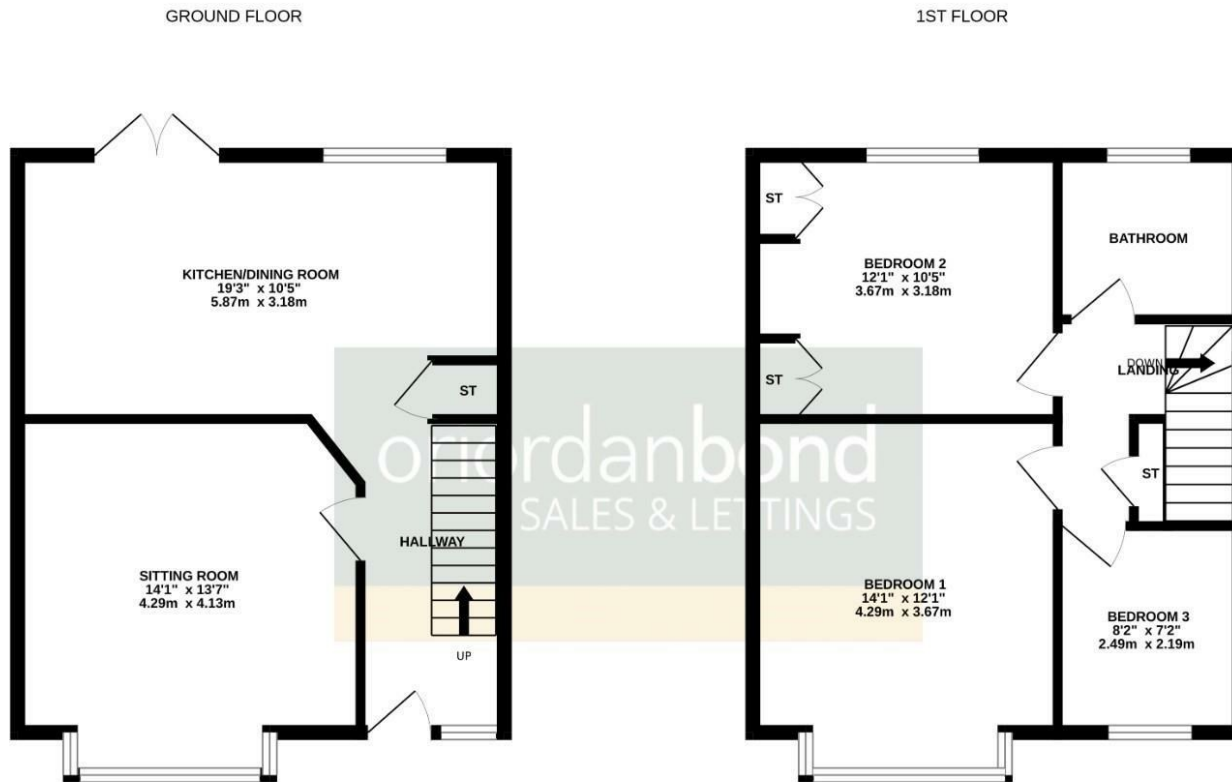
A very well presented and much improved three bedroom end terraced home situated in this highly regarded location within Phippsville. The property is offered to the market with a limited upper chain.

Accommodation comprises entrance hall, sitting room, open plan re-fitted kitchen/dining room, three first floor bedrooms and a re-fitted family bathroom. Outside are front and rear gardens and a modern double garage to the rear. Further benefits include gas radiator heating, uPVC double glazing and ample regularly available on street parking. (B/931/M)

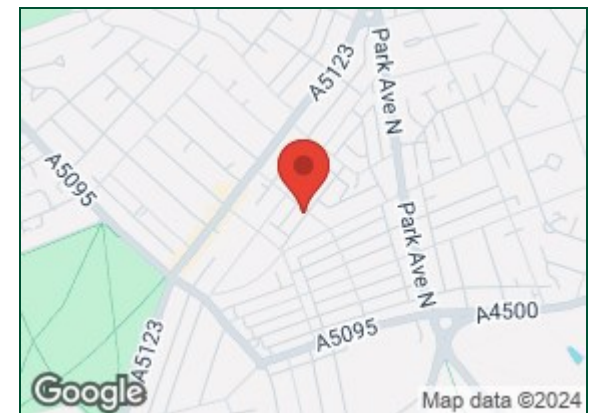
- Improved three bedroom semi-detached home
- Re-fitted kitchen/dining room
- Re-fitted bathroom
- Gas radiator heating
- Well maintained rear garden
- Double garage







TOTAL FLOOR AREA : 931sq.ft. (86.5 sq.m.) approx.
 Whilst every attempt has been made to ensure the accuracy of the floorplan contained here, measurements of doors, windows, rooms and any other items are approximate and no responsibility is taken for any error, omission or mis-statement. This plan is for illustrative purposes only and should be used as such by any prospective purchaser. The services, systems and appliances shown have not been tested and no guarantee as to their operability or efficiency can be given.
 Made with Metropix ©2024



Additional information

- Council Tax Band: C
- Energy Efficiency Rating: D

Viewing

Viewing strictly by appointment – details below

Disclaimer

O’Riordan Bond Estate Agents Limited has not tested apparatus, equipment, fittings or services and so cannot verify they are in working order. The buyer is advised to obtain verification from their solicitor or surveyor.

O’Riordan Bond Abington Sales

01604 639007

abington@oriordanbond.co.uk

