



**Milton Street**

Poets Corner, Northampton

**oriordanbond**  
SALES & LETTINGS



## Milton Street

Poets Corner

NN2 7JF

50% SHARED OWNERSHIP £115,000

O'Riordan Bond is delighted to offer for sale this three bedroom Victorian terraced home on a 50% shared ownership basis, located in Kingsley in the area affectionately known as 'Poets Corner.'

Accommodation comprises entrance hall, through sitting/dining room with feature open fireplace, a refitted kitchen, rear lobby, three-piece family bathroom and a converted cellar (subject to building regs.) To the first floor are three bedrooms. Outside are gardens to the front and rear. Further benefits include uPVC double glazing and gas radiator heating. (B/988/M)

AGENTS NOTE: Please note the Housing Association, whom own the remaining 50% share, insist on certain restrictions regarding prospective buyers such as applicants must not currently own one or more properties and the property cannot be rented out at any point. There is a rent to pay (£290 per calendar month) on the other 50% share that the Housing Association own but there is potential to staircase/buy further shares in the future.

Leasehold Information: Lease Remaining - 99 years (as of 2024) / Rent on Remaining Share - £290 per calendar month

### Additional information

- Council Tax Band: B
- Energy Efficiency Rating: E

### Viewing

Viewing strictly by appointment – details below

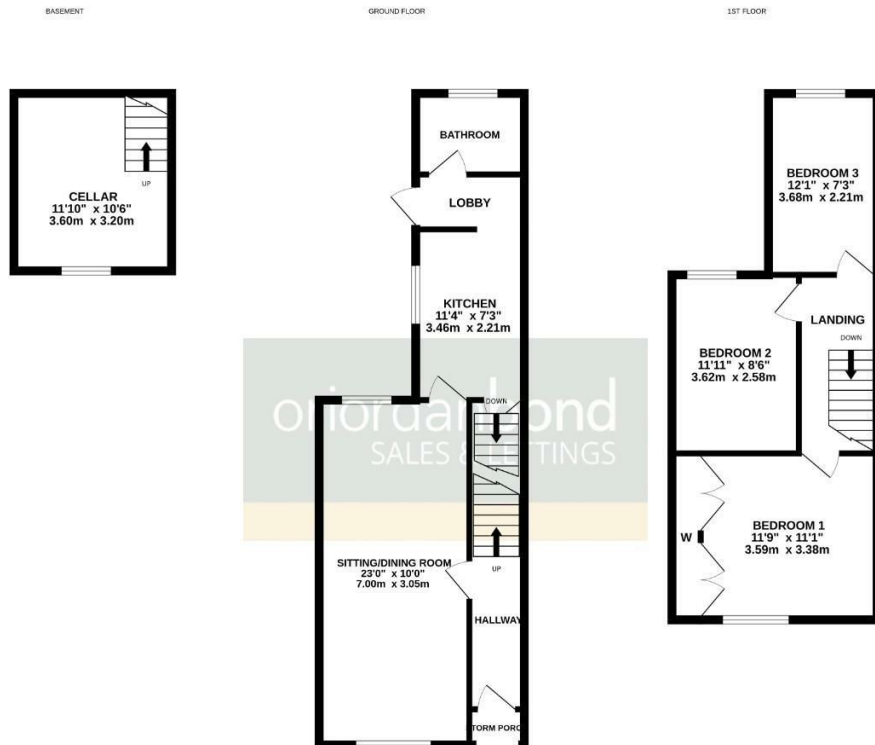
### Disclaimer

O'Riordan Bond Estate Agents Limited has not tested apparatus, equipment, fittings or services and so cannot verify they are in working order. The buyer is advised to obtain verification from their solicitor or surveyor.

O'Riordan Bond Abington Sales

01604 639007

abington@oriordanbond.co.uk



TOTAL FLOOR AREA : 988 sq.ft. (91.8 sq.m.) approx.

While every attempt has been made to ensure the accuracy of the floorplan contained here, measurements of doors, windows, rooms and any other items are approximate and no responsibility is taken for any error, omission or mis-statement. This plan is for illustrative purposes only and should be used as such by any prospective purchaser. The services, systems and appliances shown have not been tested and no guarantee as to their operability or efficiency can be given. Made with Neoproc 02022.