



Wycliffe Road
Abington, Northampton

oriordanbond
SALES & LETTINGS



Wycliffe Road

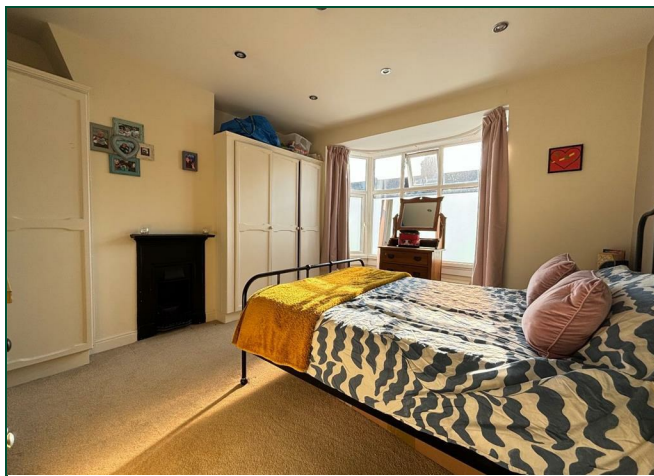
Abington
NN1 5JF

Price
£278,995

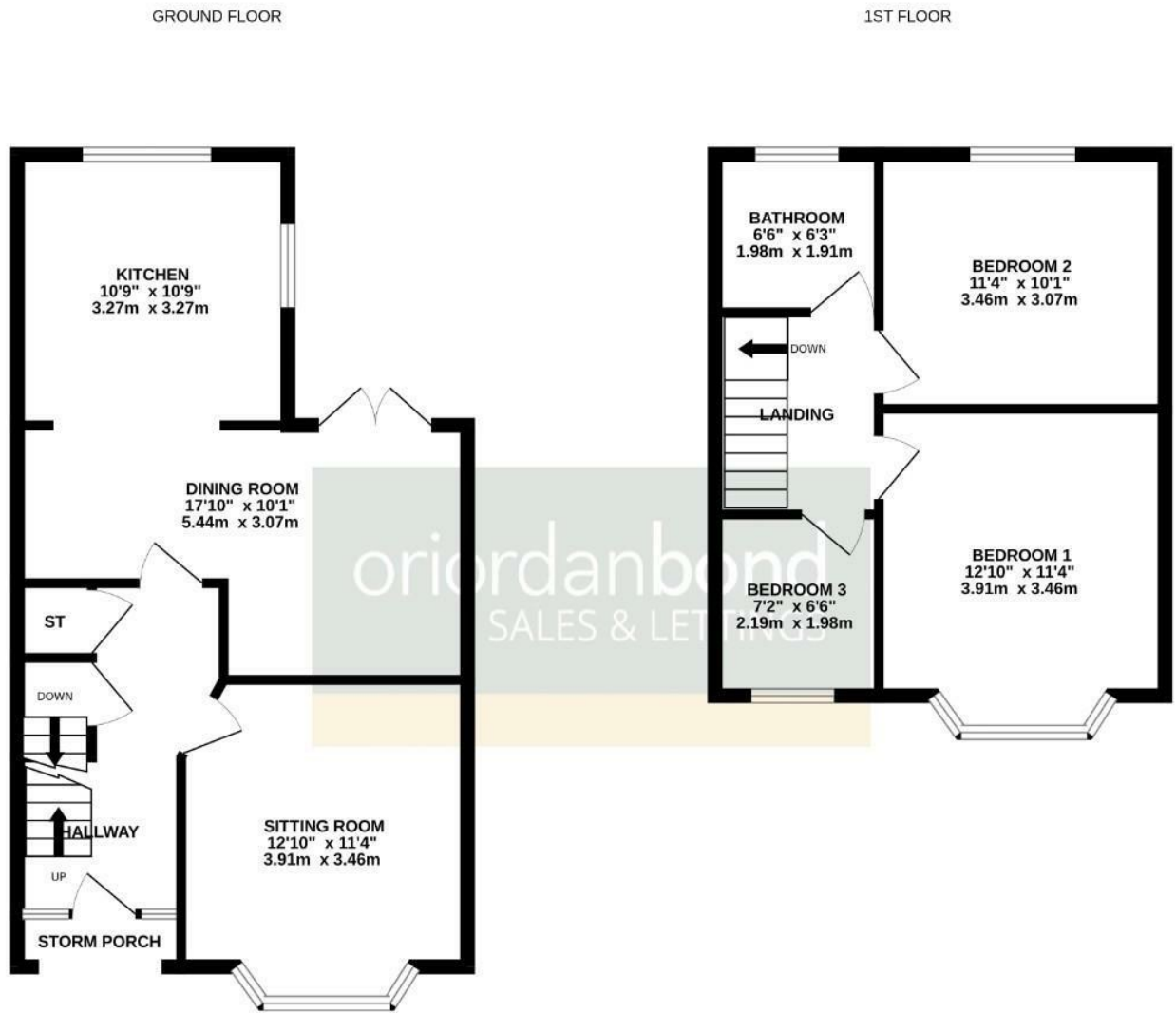
A well presented and extended mature three bedroom double bay fronted terraced home situated on one of Abington's most popular roads. Within short walking distance to Northampton School for Boys, the property has been much improved by the current owners and is offered to the market with no upper chain.

The accommodation comprises entrance hall, sitting room, extended and re-fitted kitchen/dining room, three first floor bedrooms and a family bathroom. Externally there is a well presented enclosed rear garden with the added benefit of gated side access. Further benefits include gas radiator heating and uPVC double glazing. (B/1100/M)

- Extended three bedroom terraced home
- Extended re-fitted kitchen/dining room
- Gas radiator heating
- uPVC double glazing
- Enclosed rear garden
- No upper chain







TOTAL FLOOR AREA : 1100sq.ft. (102.2 sq.m.) approx.
 Whilst every attempt has been made to ensure the accuracy of the floorplan contained here, measurements of doors, windows, rooms and any other items are approximate and no responsibility is taken for any error, omission or mis-statement. This plan is for illustrative purposes only and should be used as such by any prospective purchaser. The services, systems and appliances shown have not been tested and no guarantee as to their operability or efficiency can be given.
 Made with Metropix ©2024



Additional information

- Council Tax Band: C
- Energy Efficiency Rating:

Viewing

Viewing strictly by appointment – details below

Disclaimer

O’Riordan Bond Estate Agents Limited has not tested apparatus, equipment, fittings or services and so cannot verify they are in working order. The buyer is advised to obtain verification from their solicitor or surveyor.

O’Riordan Bond Abington Sales

01604 639007

abington@oriordanbond.co.uk

