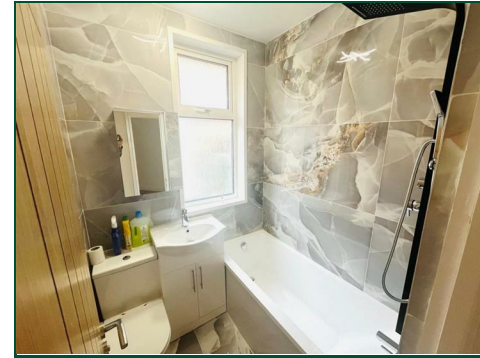


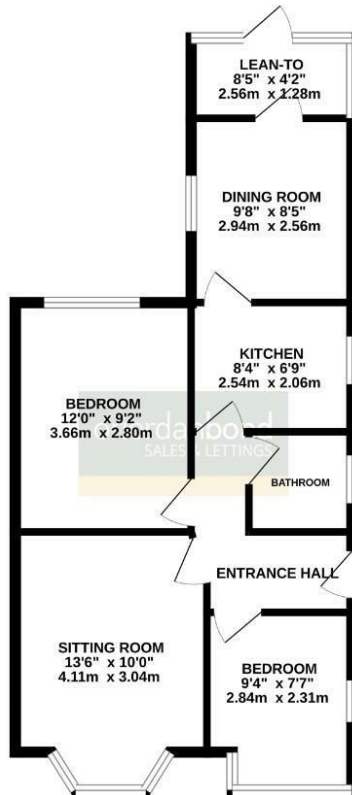


Milton Street North
Kingsley, Northampton

oriordanbond
SALES & LETTINGS



GROUND FLOOR
552 sq.ft. (51.3 sq.m.) approx.



TOTAL FLOOR AREA - 552 sq.ft. (51.3 sq.m.) approx.

Whilst every attempt has been made to ensure the accuracy of the floorplan contained here, measurements of doors, windows, rooms and any other items are approximate and no responsibility is taken for any error, omission or mis-statement. This plan is for illustrative purposes only and should be used as such by any prospective purchaser. The services, systems and appliances shown have not been tested and no guarantee as to their operability or efficiency can be given.
Made with Metropix CS2024

Milton Street North

Kingsley
NN2 7DD

PRICE £242,500

O'Riordan Bond is delighted to offer for sale this extended two bedroom semi detached bungalow which has recently undergone a comprehensive refurbishment programme throughout.

Offered for sale with no onward chain, the accommodation comprises entrance hall, bay fronted sitting room with focal fireplace, a striking re-fitted kitchen, separate dining room, small brick-built sun room, two bedrooms and a brand new bathroom with shower over the bath. Outside is potential for off road parking to the front (subject to planning permission) and a good size enclosed low maintenance garden to the rear. Further benefits include gas radiator heating and uPVC double glazing. (A/552/M)

Additional information

- Council Tax Band: B
- Energy Efficiency Rating: E

Viewing

Viewing strictly by appointment – details below

Disclaimer

O'Riordan Bond Estate Agents Limited has not tested apparatus, equipment, fittings or services and so cannot verify they are in working order. The buyer is advised to obtain verification from their solicitor or surveyor.

O'Riordan Bond Abington Sales
01604 639007

abington@oriordanbond.co.uk

