



**Ashburnham Road**  
Abington, Northampton

**oriordanbond**  
SALES & LETTINGS





GROUND FLOOR  
569 sq.ft. (52.3 sq.m.) approx.



1ST FLOOR  
555 sq.ft. (51.6 sq.m.) approx.



## Ashburnham Road

Abington  
NN1 4RA

PRICE £330,000

**A stunning three bedroom Victorian double bay fronted end terrace property situated in this popular area of Abington within close proximity to Abington Park and The Racecourse.**

The accommodation comprises entrance hall, sitting/dining room, kitchen/breakfast room and cloakroom/WC on the ground floor. To the first floor are three double bedrooms and a family bathroom. Externally is a low maintenance rear garden with side access. Further benefits include double glazing, gas radiator heating, character features and a fully converted cellar. (A/1118/S)

### Additional information

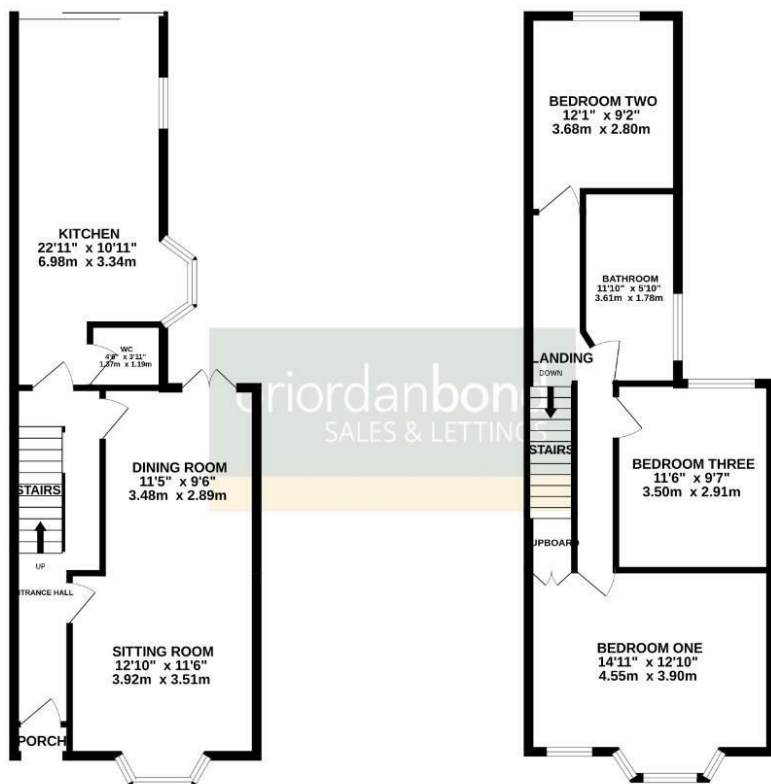
- Council Tax Band: C
- Energy Efficiency Rating: E

### Viewing

Viewing strictly by appointment – details below

### Disclaimer

O'Riordan Bond Estate Agents Limited has not tested apparatus, equipment, fittings or services and so cannot verify they are in working order. The buyer is advised to obtain verification from their solicitor or surveyor.



TOTAL FLOOR AREA : 1118 sq.ft. (103.9 sq.m.) approx.

Whilst every attempt has been made to ensure the accuracy of the floorplans contained here, measurements of doors, windows, rooms and any other items are approximate and no responsibility is taken for any error, omission or mis-statement. This plan is for illustrative purposes only and should be used as such by any prospective purchaser. The services, systems and appliances shown have not been tested and no guarantee as to their operability or efficiency can be given. Made with Metropix 10/2024.

O'Riordan Bond Abington Sales  
01604 639007

abington@oriordanbond.co.uk

