


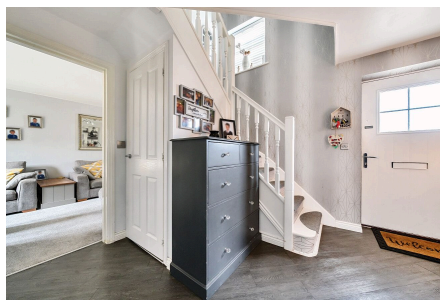


## Sedge Road, Andover, SP11 6RL

£360,000

 3  2  1



This three-bedroom house also has a garage. The ground floor features a sitting room, a kitchen, and a WC. The first floor consists of three bedrooms, an en-suite attached to the main bedroom, and a family bathroom. The property is located in a residential area with access to local amenities and transport links.

## Key Features

- 
- 
- 
- 
- 
- 

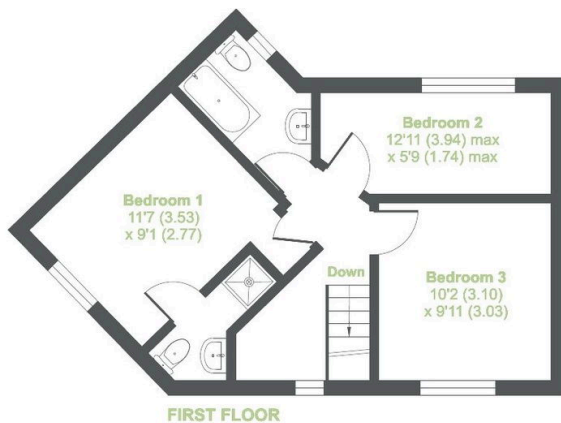
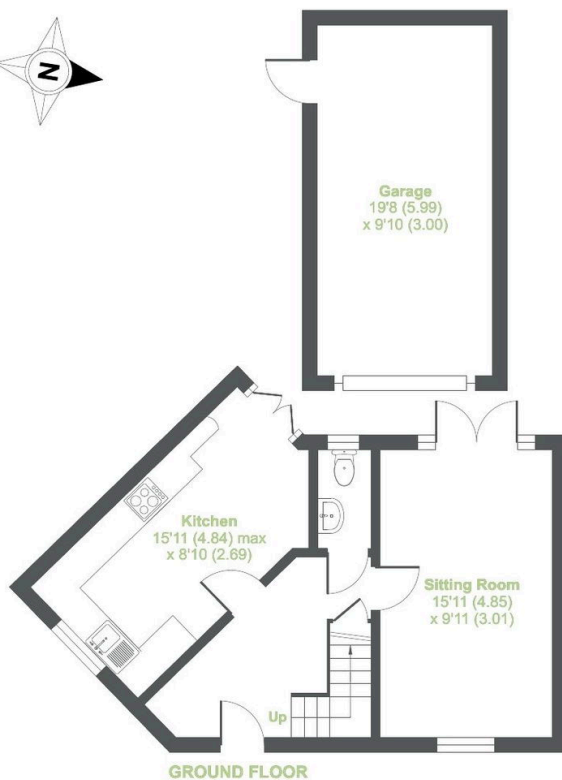
## Sedge Road, Andover, SP11

Approximate Area = 838 sq ft / 77.9 sq m

Garage = 193 sq ft / 17.9 sq m

Total = 1031 sq ft / 95.8 sq m

For identification only - Not to scale



Floor plan produced in accordance with RICS Property Measurement 2nd Edition, Incorporating International Property Measurement Standards (IPMS2 Residential). © nchecom 2025. Produced for Brockenhurst Estate Agents. REF: 1265617

