



Archer Close
Clifton, York
YO30 6FB

£300,000



Located within the popular residential area of Clifton, which is just a short walk from an array of amenities such as shops, eateries, bus connections and schools, is this modern end terrace. Offering plenty of accommodation throughout and a low maintenance courtyard style garden, this property is sure to be popular among a variety of buyers.

The properties on Archer Close were built in 2012 and are well regarded for their photovoltaic solar panels and high levels of insulation making them a very sustainable build.

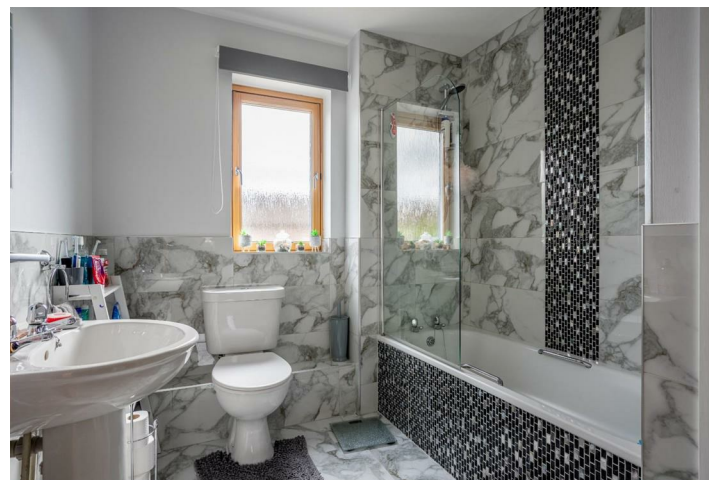
Internally the property offers an entrance hall which leads into a spacious living room positioned to the front of the property. Bright and airy, this room benefits from a large window allowing natural light to flood through. To the rear of the property is the spacious kitchen diner with fitted units for storage and French doors leading out to the garden. The ground floor accommodation is completed by the understairs cupboard and convenient w.c which, with minimal work, could accommodate a shower.

On the first floor are two double bedrooms, a spacious three-piece family bathroom and a wide landing with integrated storage. Finally, on the second floor, is the third double bedroom with two large storage spaces, one of which has the potential for other uses.

Externally is on street parking, and a low maintenance courtyard style garden with a summerhouse for extra space.

Sure to be popular among a variety of buyers, early viewing is highly recommended.

Council Tax Band- C

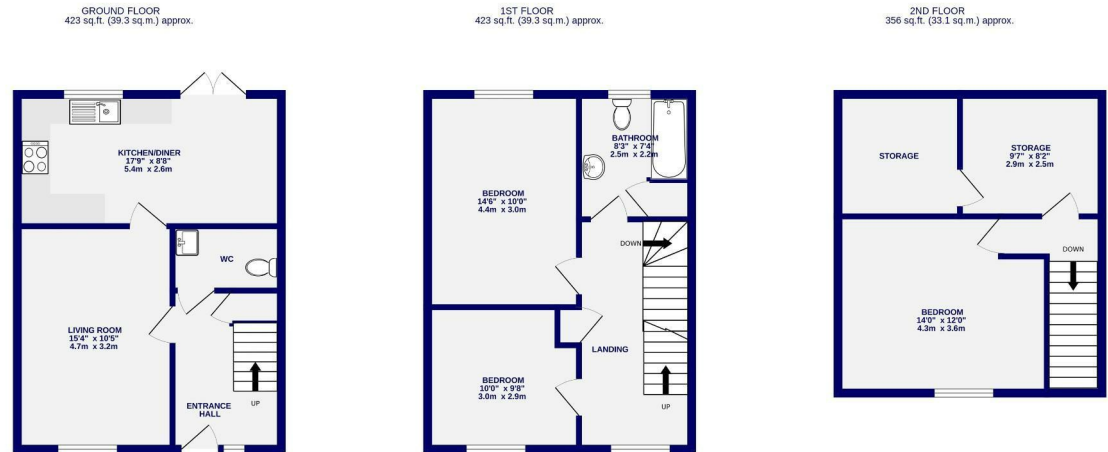




Archer Close Clifton, York YO30 6FB

Freehold
Council Tax Band - C

- Modern End Townhouse
- Three Double Bedrooms
- Ground Floor W.C
- Popular Location
- Low Maintenance Garden
- EPC- C



TOTAL FLOOR AREA : 1203 sq.ft. (111.8 sq.m.) approx.
Whilst every attempt has been made to ensure the accuracy of the floorplan, measurements of rooms and any other items are approximate. If included in the plan the garage/shed will form part of the overall floor area and no responsibility is taken for any error, omission or mis-statement. This plan is for illustrative purposes only and should be used as such by any prospective purchaser. The services, systems and appliances shown have not been tested and no guarantee as to their operability.
Made with Metropix ©2024

These particulars have been prepared as accurately and as reliably as possible, but should not be relied upon as 'statement of fact'. If there is any point which is of particular importance to you, please contact the office and we would be pleased to check the information. We have not tested any services, appliances, equipment or facilities and nothing in these particulars should be deemed to be a statement that they are in good working order, or that the property is in good structural condition or otherwise. Any areas, measurements, floor plans or distances referred to are given as a guide only and are not precise. Purchasers must satisfy themselves by inspection or by otherwise regarding the items mentioned above and as to the correctness of each of the statements contained in these particulars. No person in the employment of Ashtons has any authority to make or give any representation or warranty whatsoever in relation to this property or these particulars nor enter into any contract relating to the property on behalf of the vendor.