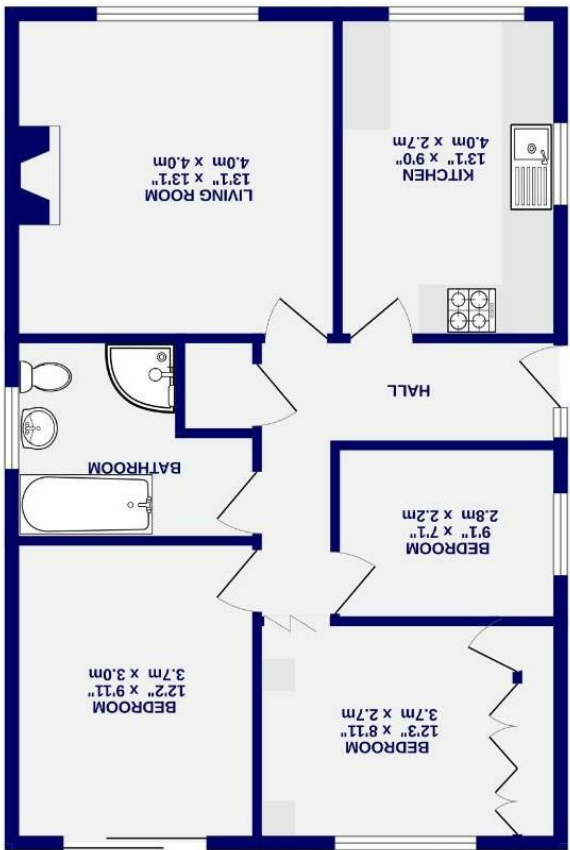


GROUND FLOOR  
732 sq.ft. (68.0 sq.m.) approx.



- Freehold  
Council Tax Band - D

Gable Park  
Rutforth, York  
YO23 3RN





Gable Park  
Rufforth, York  
YO23 3RN

£360,000

 3  1

Located in the ever-popular village of Rufforth, within easy reach of York, its surrounding suburban areas, and offering convenient access to the outer ring road and A64, is this well-maintained three bedroom detached bungalow. Enjoying a quiet cul-de-sac position, this lovely home is offered with no forward chain and presents an ideal opportunity for those looking to downsize.

The accommodation comprises an entrance hall leading through to a generous lounge and a well-proportioned breakfast kitchen. There are three comfortable bedrooms and a spacious bathroom, while the property itself has been well cared for and offers excellent potential for modernisation to suit individual taste.

Externally, there are low-maintenance gardens to the front and rear, with the enclosed rear garden providing a peaceful outdoor space. A block-paved driveway and detached single garage complete this attractive home, offering both convenience and ample storage.

Offered no onward chain, early viewing highly recommended.

Council Tax Band D

