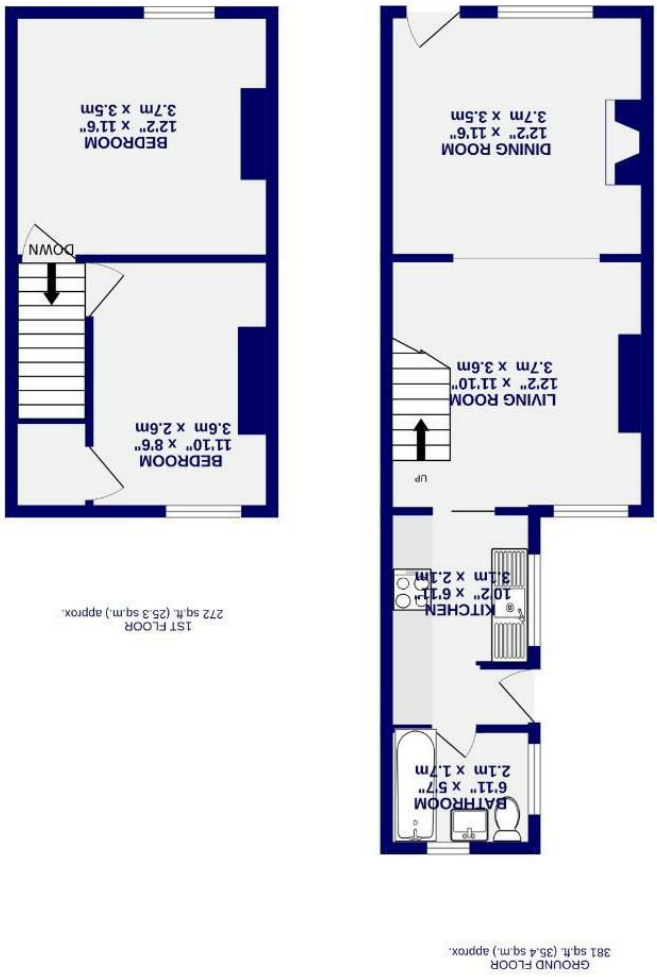




Railway View Dringhouses, York YO24 2HS

Freehold
Council Tax Band - B

- Victorian Terrace Property
- Two Double Bedrooms
- Generous Garden
- Garage
- Popular Residential Area
- Close To Nearby Green Spaces
- No Onward Chain
- EPC TBC



GROUND FLOOR
381 sq.ft. (35.4 sq.m.) approx.

1ST FLOOR
272 sq.ft. (25.3 sq.m.) approx.

These particulars have been prepared as accurately and as reliably as possible, but should not be relied upon as 'statement of fact'. If there is any point which is of particular importance to you, please contact the office and we would be pleased to check the information. We have not tested any services, appliances, equipment or facilities and nothing in these particulars should be deemed to be a statement that they are in good working order, or that the property is in good structural condition or otherwise. Any areas, measurements, floor plans or distances referred to are given only as a guide only and are not precise. Purchasers must satisfy themselves by inspection or by otherwise regarding the items mentioned above and as to the correctness of each of the statements contained in these particulars. No person in the employment of Ashtons has any authority to make or give any representation or warranty whatsoever in relation to this property or these particulars nor enter into any contract relating to the property on behalf of the vendor.

Railway View
Dringhouses, York
YO24 2HS

£190,000

2 1

Located in the ever-popular residential area of Dringhouses, to the south of York, this charming Victorian terrace offers wonderful potential for buyers looking to create a home of their own. Offered with no onward chain, the property provides fantastic scope for further renovation and development.

Railway View is a peaceful and pretty street, well placed for access to York City Centre and the nearby amenities, with pleasant local walks and green spaces close by.

The accommodation comprises two reception rooms and a fitted kitchen to the rear, along with a ground floor bathroom. To the first floor are two well-proportioned double bedrooms.

Set on a larger-than-average plot for properties of this style, the garden provides plenty of outdoor space, including a lawned area enclosed by fencing, and a pathway leading to a garage positioned to the rear, offering further potential for storage or conversion, subject to consents.

A property full of character and opportunity, viewing is highly recommended.

Council Tax Band B

