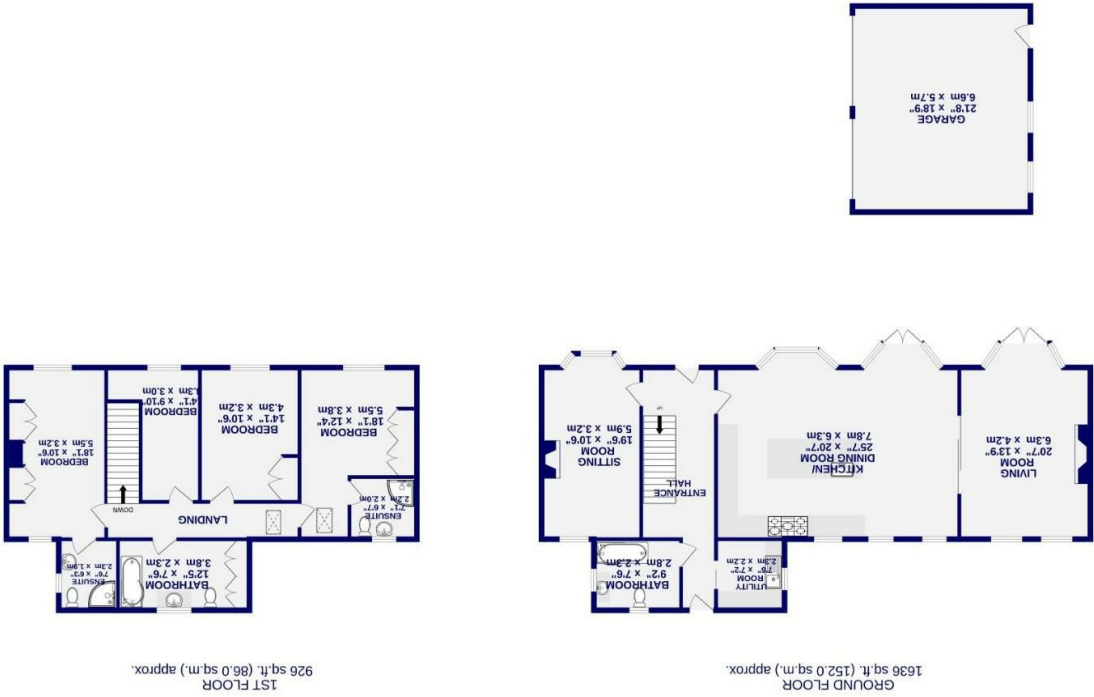


These particulars have been prepared as accurately and as reliably as possible, but should not be relied upon as 'statement of fact'. If there is any point which is of particular importance to you, please contact the office and we would be pleased to check the information. We have not tested any services, appliances, equipment or facilities and nothing in these particulars should be deemed to be a statement that they are in good working order, or that the property is in good structural condition or otherwise. Any areas, measurements, floor plans or distances referred to are given as a guide only and are not precise. Purchasers must satisfy themselves by inspection or by otherwise regarding the items mentioned above and as to the correctness of each of the statements contained in these particulars. No person in the employment of Ashtons has any authority to make or give any representation or warranty whatsoever in relation to this property or these particulars nor enter into any contract relating to the property on behalf of the vendor.

- Exceptional Detached House
- Four Double Bedrooms
- Four Bathrooms
- Stunning Open Plan Space
- Upgraded Kitchen
- Double Garage
- Solar Panels and EV Charger
- Sought After Village Setting
- EPC B

Freehold
Council Tax Band - F

Main Street
Wilberfoss, York
YO41 5NN



Main Street
Wilberfoss, York
YO41 5NN

£725,000



Located in the sought-after village of Wilberfoss, just six miles from York's Outer Ring Road, is this stunning and substantial detached family home. Set back from the main road down a beautiful tree-lined driveway, the property enjoys a peaceful and private position. Immaculately maintained, it offers spacious and versatile accommodation, gardens that enjoy sunshine throughout the day, and a detached double garage with solar panels. Perfect as a family home, it benefits from regular bus connections to both Pocklington and York city centre.

Internally, the property opens into a generous entrance hallway with oak flooring extending from front to back. To the left is the breathtaking open-plan kitchen and dining area, featuring exposed wooden beams and windows across multiple aspects, flooding the space with natural light. The kitchen has been stylishly upgraded by the current owners with a range of contemporary wall and base units, complemented by granite worktops and a feature range cooker. Sliding doors open into the impressive living room, complete with a vaulted ceiling, further exposed beams, and a wood-burning stove that creates a wonderful focal point.

The ground floor also offers a versatile second reception room, currently used as a sitting room and home office, along with a well-proportioned utility room and a modern ground-floor bathroom.

To the first floor are four bedrooms, two of which benefit from beautifully appointed en-suite shower rooms, along with a superb family bathroom.

