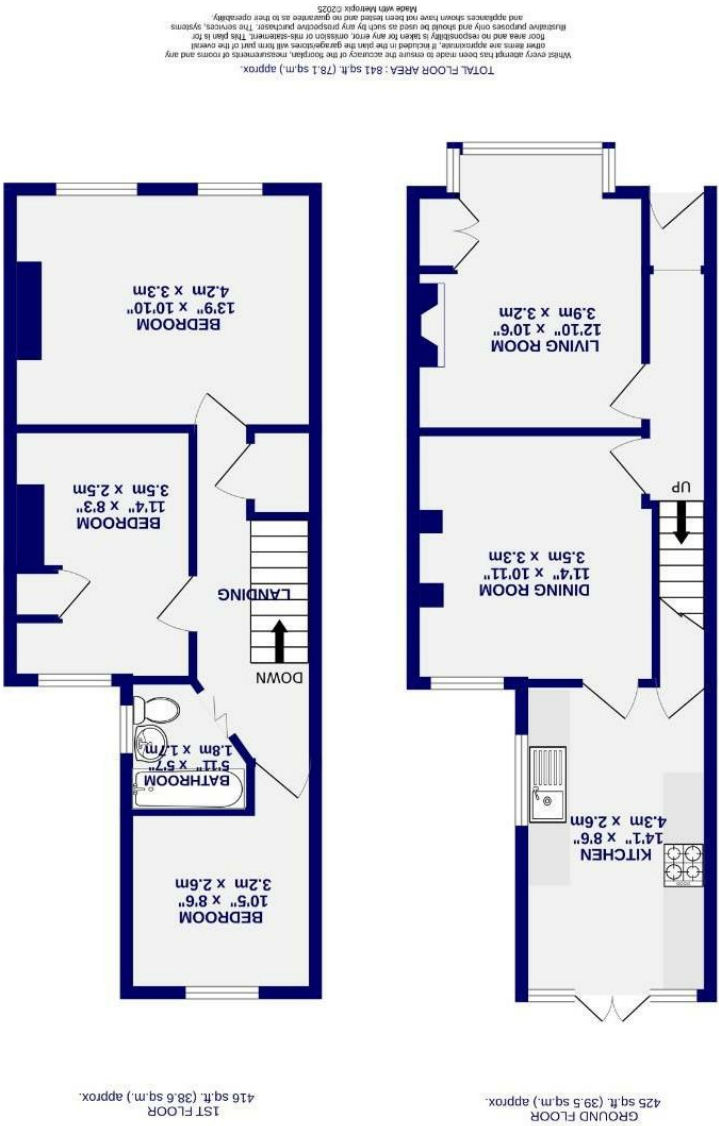




# Murray Street , York YO24 4JE

Freehold  
Council Tax Band - B

- Three Bedroom End Terrace
- Bright Bay Fronted Lounge
- Character Features Throughout
- Shaker Style Kitchen
- Sought After Holgate Location
- Spacious Walled Rear Courtyard
- Wonderful Family Home
- Views Over The Church Green
- EPC D



These particulars have been prepared as accurately and as reliably as possible, but should not be relied upon as 'statement of fact'. If there is any point which is of particular importance to you, please contact the office and we would be pleased to check the information. We have not tested any services, appliances, equipment or facilities and nothing in these particulars should be deemed to be a statement that they are in good working order, or that the property is in good structural condition or otherwise. Any areas, measurements, floor plans or distances referred to are given as a guide only and are not precise. Purchasers must satisfy themselves by inspection or by otherwise regarding the items mentioned above and as to the correctness of each of the statements contained in these particulars. No person in the employment of Ashtons has any authority to make or give any representation or warranty whatsoever in relation to this property or these particulars nor enter into any contract relating to the property on behalf of the vendor.



Murray Street  
, York  
YO24 4JE

Offers Over £375,000

 3  1

Ashtons Estate Agents are delighted to offer and present this wonderful three bedroom end terrace, part of a charming row of six homes. Nestled in the sought after residential area of Holgate, this beautiful home is within walking distance of York city centre, the train station, and the outstanding restaurants, shops, and bars that the historic city has to offer. The York Ring Road is also just a short distance away, providing excellent access for commuting and travel further afield.

Upon entering the home, the original quarry-tiled floor in the entrance hall sets a warm and characterful tone. This leads into a bright and airy living/dining room, bathed in natural light from the traditional angled bay window at the front. A log burner adds charm and comfort to this versatile living space. The kitchen, located at the rear, features shaker-style base units and a Belfast sink, in keeping with the period character of the home. French patio doors open out to a larger than average courtyard garden, perfect for outdoor enjoyment.

To the first floor are three bedrooms, with the primary bedroom positioned at the front, offering a spacious retreat to relax and unwind. The house bathroom is well presented, featuring a white suite and a shower over the bath.

Externally, the front of the property features a walled forecourt with uninterrupted views of the Church Green. The private walled rear courtyard garden is a true highlight, with landscaped flower beds, built-up planters, and a stone patio, ideal for entertaining or enjoying a peaceful morning coffee.

This fabulous traditional family home is sure to be popular. A viewing is highly recommended to fully appreciate all that the property and location have to offer.

Council Tax Band - B

