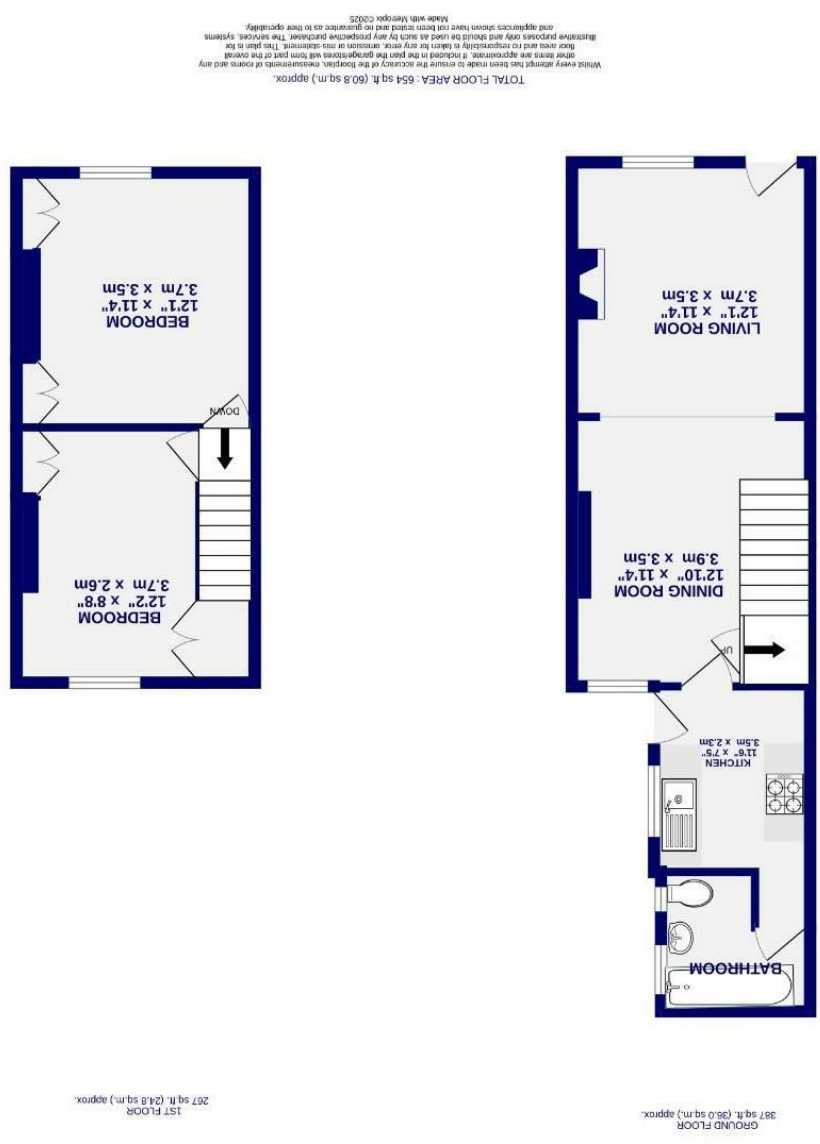




Railway View Dringhouses, York YO24 2HS

Freehold
Council Tax Band - B

- Period Terrace House
- Two Double Bedrooms
- Front Courtyard
- Rear Garden & Garage
- On Street Parking
- South East Facing Garden
- EPC D



These particulars have been prepared as accurately and as reliably as possible, but should not be relied upon as 'statement of fact'. If there is any point which is of particular importance to you, please contact the office and we would be pleased to check the information. We have not tested any services, appliances, equipment or facilities and nothing in these particulars should be deemed to be a statement that they are in good working order, or that the property is in good structural condition or otherwise. Any areas, measurements, floor plans or distances referred to are given as a guide only and are not precise. Purchasers must satisfy themselves by inspection or by otherwise regarding the items mentioned above and as to the correctness of each of the statements contained in these particulars. No person in the employment of Ashtons has any authority to make or give any representation or warranty whatsoever in relation to this property or these particulars nor enter into any contract relating to the property on behalf of the vendor.

Railway View
Dringhouses, York
YO24 2HS

£240,000

 2  1

This charming two-bedroom period terrace is tucked away on a quiet, sought-after street within walking distance of York Racecourse, with excellent access to local amenities, the city centre and the ring road. Beautifully presented and well maintained by the current owners, the property blends character and modern style to create a warm and inviting home.

A forecourted front garden leads into a bright and spacious open-plan living and dining room, with dual-aspect double-glazed windows allowing for an abundance of natural light. To the rear, the kitchen is finished with a range of modern units, solid oak worktops, porcelain sink, and tiled splashbacks, with plumbing for a washing machine and access to the rear courtyard. The ground floor also benefits from a recently updated bathroom with a three piece suite with bath and shower over.

To the first floor, a light landing leads to two double bedrooms, both with built-in cupboards and fitted carpets. The principal bedroom is to the front, with twin storage cupboards and a pleasant outlook over the street, while the second bedroom enjoys views over the rear courtyard.

Externally, the property boasts a generous courtyard garden with astro turf and timber fencing for privacy. A rare addition in this location, the property also benefits from a detached single garage to the rear, providing secure parking or additional storage.

Located in an area popular with both first-time buyers and those looking to downsize, this delightful home offers a wonderful balance of period charm and practical living. Early viewing is highly recommended.

Council Tax Band- B

