



Sawyers Crescent Copmanthorpe, York YO23 3YA

£350,000



A beautifully updated and extended three-bedroom detached home, situated in the heart of Copmanthorpe, just a short walk from the village centre and highly regarded local school an ideal family home in a sought-after location.

The entrance hallway welcomes you with wood-effect flooring and leads to a spacious living room with a large bay window to the front, offering plenty of natural light and a cosy feel with a feature electric fire. The heart of the home is the stunning newly fitted open-plan dining kitchen, featuring sleek white handleless units, integrated appliances, and ample storage. This modern and functional layout is perfect for both everyday living and entertaining. The property has been thoughtfully extended to the rear, creating a bright and versatile study space with French doors opening onto the garden, alongside a convenient ground floor W.C.

Upstairs, the landing provides access to three well-proportioned bedrooms, two doubles and a generous single, all served by a modern family bathroom with a white suite including a shower over the bath. The loft is part boarded and insulated, offering useful storage space.

Externally, the home sits on a generous plot with a lawned front garden and private driveway providing parking for multiple vehicles. To the rear large storage shed and west-facing garden offer a perfect setting for outdoor relaxation and future potential for further extension, subject to the necessary consents. This home is a must-see for families looking to settle in one of York's most popular villages.

Council Tax Band C

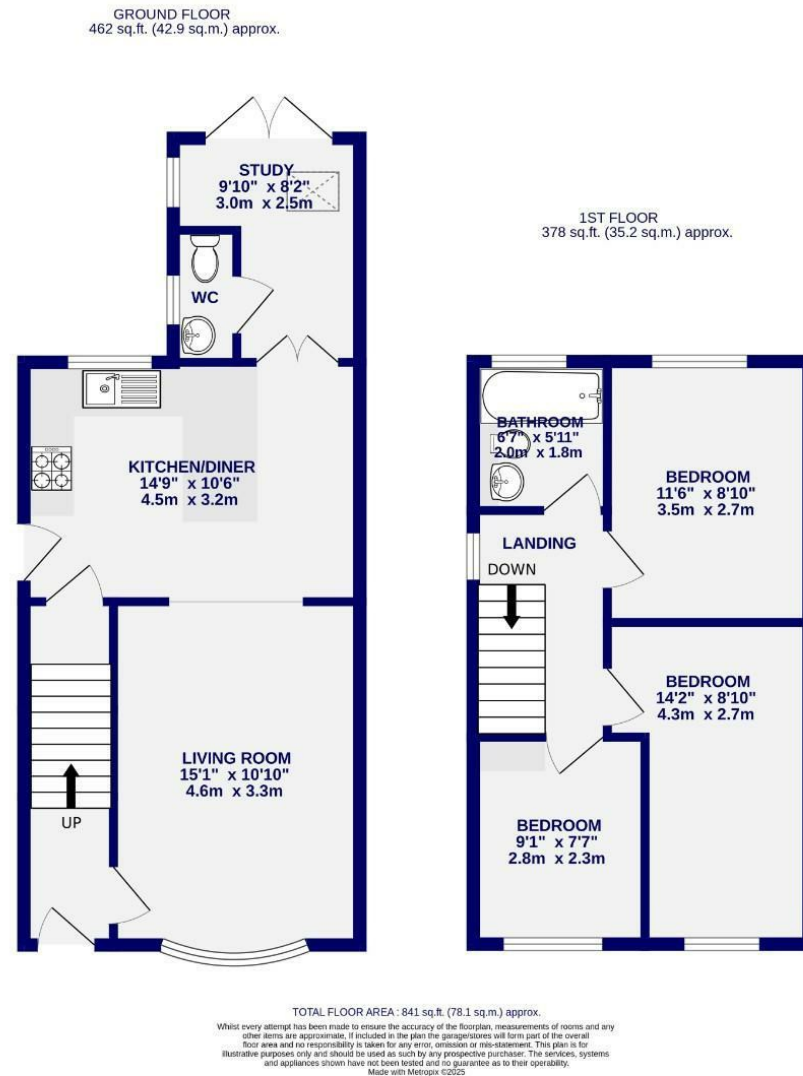




Sawyers Crescent Copmanthorpe, York YO23 3YA

Freehold
Council Tax Band - C

- Detached House
- Three Bedrooms
- New Kitchen
- Rear Extension
- Cul de Sac
- Well Presented
- EPC TBC



These particulars have been prepared as accurately and as reliably as possible, but should not be relied upon as 'statement of fact'. If there is any point which is of particular importance to you, please contact the office and we would be pleased to check the information. We have not tested any services, appliances, equipment or facilities and nothing in these particulars should be deemed to be a statement that they are in good working order, or that the property is in good structural condition or otherwise. Any areas, measurements, floor plans or distances referred to are given as a guide only and are not precise. Purchasers must satisfy themselves by inspection or by otherwise regarding the items mentioned above and as to the correctness of each of the statements contained in these particulars. No person in the employment of Ashtons has any authority to make or give any representation or warranty whatsoever in relation to this property or these particulars nor enter into any contract relating to the property on behalf of the vendor.