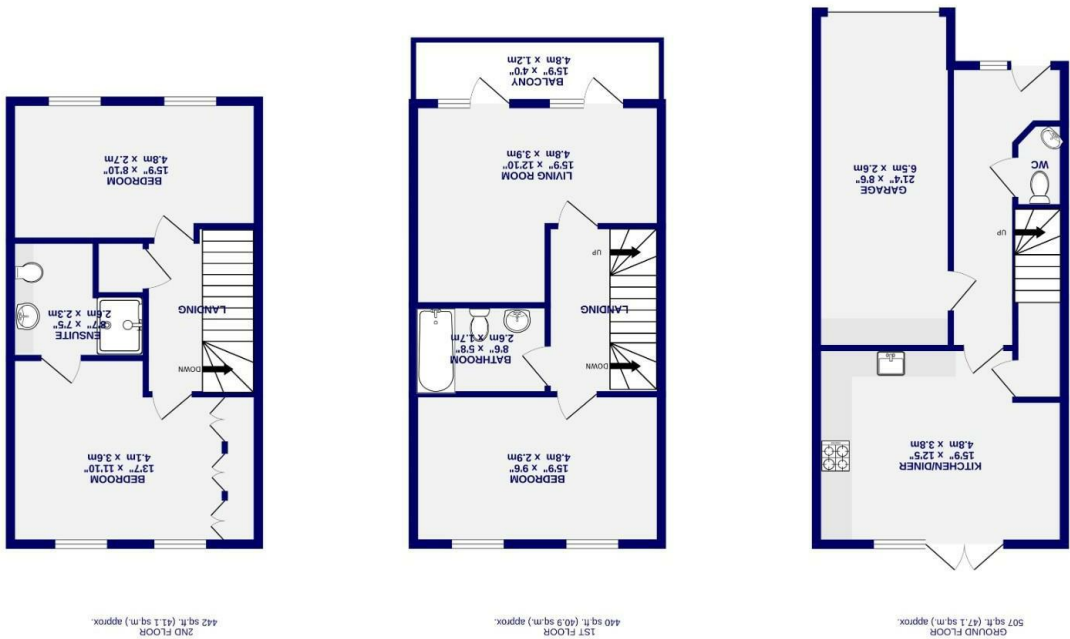


These particulars have been prepared as accurately and as reliably as possible, but should not be relied upon as 'statement of fact'. If there is any point which is of particular importance to you, please contact the office and we would be pleased to check the information. We have not tested any services, appliances, equipment or facilities and nothing in these particulars should be deemed to be a statement that they are in good working order, or that the property is in good structural condition or otherwise. Any areas, measurements, floor plans or distances referred to are given as a guide only and are not precise. Purchasers must satisfy themselves by inspection or by otherwise regarding the items mentioned above and as to the correctness of each of the statements contained in these particulars. No person in the employment of Ashtons has any authority to make or give any representation or warranty whatsoever in relation to this property or these particulars nor enter into any contract relating to the property on behalf of the vendor.

- EPC B
- No Onward Chain
- Popular Residential Development
- Landscaped Courtyard Style Garden
- Driveway & Garage
- Bathroom, Ensuite & W.C
- Three Bedrooms
- Modern Townhouse

Freehold
Council Tax Band - F

Robert Street Chocolate Works, YO23 1PS



Robert Street
Chocolate Works, York
YO23 1PS

Offers Over £600,000

 3  2

Nestled within the esteemed Chocolate Works development and in close proximity to York Racecourse, the Knavesmire, and the renowned Bishopthorpe Road, this modern three-bedroom townhouse is immaculately presented throughout and features a recently landscaped courtyard-style garden, making it an ideal family home.

Spread across three floors, the interior boasts an inviting entrance hall leading to the impressive kitchen, dining, and family area. Flooded with natural light through French doors, this space overlooks the stylishly landscaped garden. The kitchen is fitted with contemporary units, integrated appliances, and Quartz worktops. Completing the ground floor is a convenient W.C./cloakroom and internal access to the garage.

The first floor features a striking living room, enhanced by two sets of French doors opening onto a balcony that offers peaceful views of this charming development. Also on this level is a well-proportioned bedroom and a modern three-piece family bathroom.

The upper floor hosts two spacious double bedrooms, with the master bedroom benefiting from built-in wardrobes and a stylish three-piece en-suite shower room.

Externally, the beautifully landscaped courtyard garden is enclosed by fence boundaries, providing a private outdoor retreat. The property also benefits from an integral garage with driveway parking in front, as well as additional visitor parking within the development.

Expected to attract significant interest, early viewing is highly recommended to fully appreciate the quality of this home. Offered with no onward chain.

Council Tax Band- F

