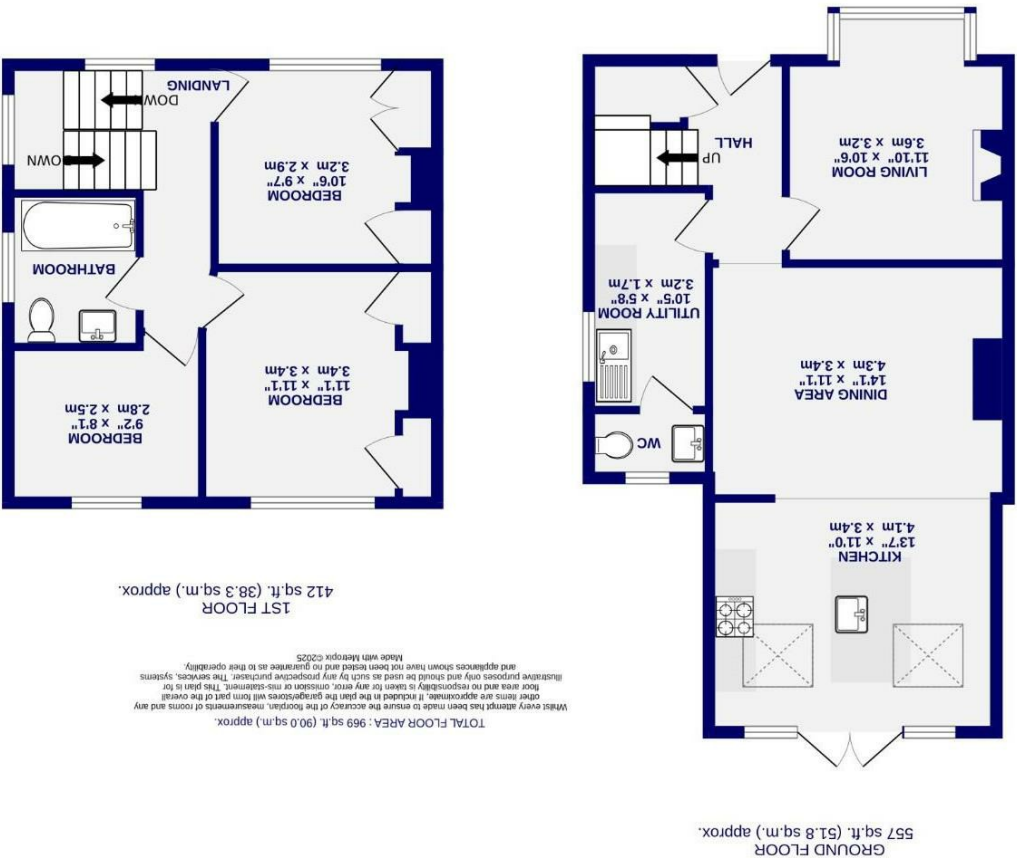




# Mayfield Grove Dringhouses, York YO24 1HJ

Freehold  
Council Tax Band - D

- Semi Detached House
- Three Bedrooms
- Extended To Rear
- Open Plan Kitchen Living Diner
- Ground Floor W.C & Utility Room
- Garage & Driveway
- Popular Residential Area



When every attempt has been made to ensure the accuracy of the figures, measurements of rooms and any other items are approximate. It is included in the plan the gauging of the overall dimensions of the house and any room and no responsibility is taken for any error, omission or mis-statement. This plan is for illustrative purposes only and should be used as a guide only and not precise. Purchasers must satisfy themselves by inspection or by otherwise regarding the items mentioned above and as to the correctness of each of the and appliances shown have not been tested and no guarantee as to their operability. Made with Metrepro.co.uk

These particulars have been prepared as accurately and as reliably as possible, but should not be relied upon as 'statement of fact'. If there is any point which is of particular importance to you, please contact the office and we would be pleased to check the information. We have not tested any services, appliances, equipment or facilities and nothing in these particulars should be deemed to be a statement that they are in good working order, or that the property is in good structural condition or otherwise. Any areas, measurements, floor plans or distances referred to are given as a guide only and are not precise. Purchasers must satisfy themselves by inspection or by otherwise regarding the items mentioned above and as to the correctness of each of the statements contained in these particulars. No person in the employment of Ashtons has any authority to make or give any representation or warranty whatsoever in relation to this property or these particulars nor enter into any contract relating to the property on behalf of the vendor.



Mayfield Grove  
Dringhouses, York  
YO24 1HJ

Asking Price £550,000

 3  1

Located in the highly sought after residential area of Dringhouses, which is to the south of York, this immaculately presented semi detached house has been impeccably renovated and thoughtfully extended throughout. A perfect family home, it boasts a beautifully landscaped south facing rear garden. Mayfield Grove is a quiet residential street, just a short stroll from the picturesque York Racecourse and the tranquil Hob Moor. Ideal for families, the property is also within close proximity to a range of well regarded primary and secondary schools, with excellent commuter links providing easy access to York city centre and the train station.

Stepping inside, the welcoming entrance hall retains its original banister and features a useful downstairs cupboard. To the left, the elegantly presented living room benefits from a large bay window, a charming wood burning stove, and bespoke cabinetry flanking the chimney breast. To the rear, the heart of the home can be found - a breathtaking open plan kitchen, living and dining area. Designed to maximize natural light, this space is illuminated by large French doors and multiple skylights, enhanced by its desirable south facing orientation. The stylish kitchen is fitted with a range of contemporary wall and base units, complemented by thick Quartz worktops, providing ample storage and workspace. A well equipped utility room and a convenient W.C. complete the ground floor.

Upstairs, a bright and airy landing leads to two spacious double bedrooms, both with built in storage. The third bedroom is generously sized and offers versatility as a home office, nursery or additional bedroom. The recently updated family bathroom features floor to ceiling tiles, a bathtub and an overhead shower, creating a sleek and modern finish.

