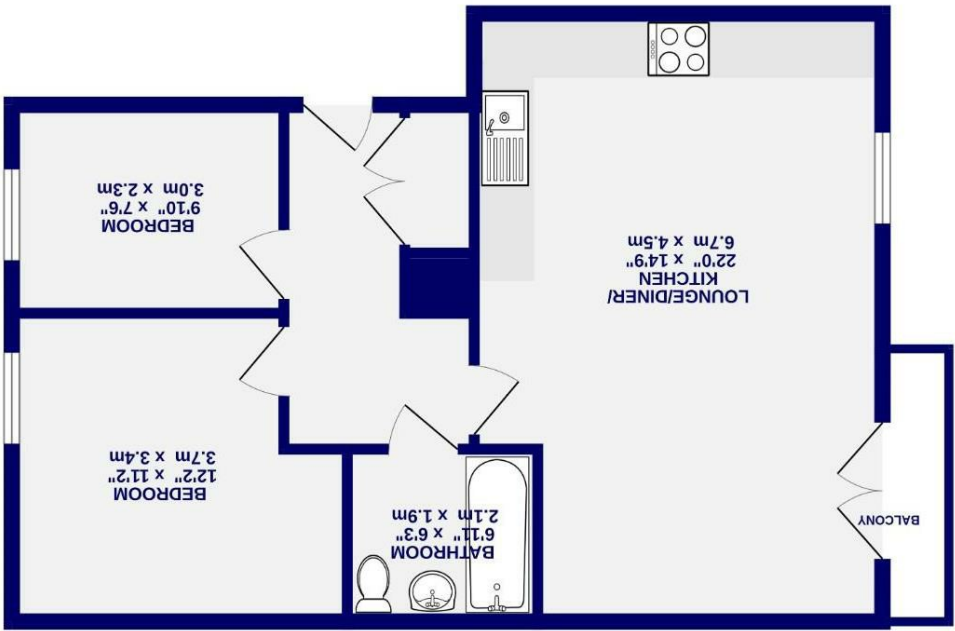


Derwent Way  
, York  
YO31 0RQ

Leasehold  
Council Tax Band - C

- 38% of Shared Ownership Property
- 2 Bedrooms
- Large Open Plan Living
- Modern Bathroom
- Small Patio Area To The Front
- Parking
- EPC - B



While every attempt has been made to ensure the accuracy of the floorplan, measurements of rooms and any other areas are approximate. It is included in the plan for the overall floor area and no responsibility is taken for any error, omission or misstatement. This plan is for illustrative purposes only and should be used as a guide only. The purchaser must satisfy themselves by inspection or by otherwise regarding the items mentioned above and as to the correctness of each of the areas, measurements, floor plans or distances referred to are given as a guide only and are not precise. Purchasers must satisfy themselves by inspection or by otherwise regarding the items mentioned above and as to the correctness of each of the statements contained in these particulars. No person in the employment of Ashtons has any authority to make or give any representation or warranty whatsoever in relation to this property or these particulars nor enter into any contract relating to the property on behalf of the vendor.



Derwent Way  
, York  
YO31 0RQ

£87,400

 2  1

A rare opportunity to acquire a 38% share of a large 2 bedroom apartment with external space to the front, in this sought after location, handy for a range of shops and local amenities.

Ground floor apartments rarely become available on the open market and are highly desirable, especially in such a superb location.

The apartment offers large open plan living as well as 2 good size bedrooms and a house bathroom. There is an allocated parking space to the rear.

Terms and conditions apply when buying a shared ownership property.

Leasehold  
Length of lease- 94 years remaining  
Shared ownership rent  
Ground rent (estate charge)  
Service charge per month  
= £514.28

Council Tax - Band C

