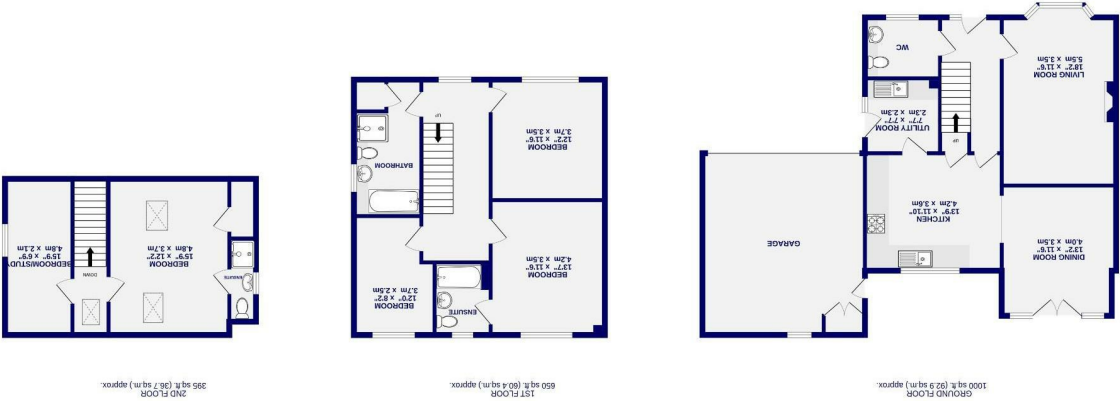




# Back Lane Riccall, York YO19 6PT

Freehold  
Council Tax Band - F

- Substantial Family Home
- Five Bedrooms
- Well Presented Throughout
- Solar Panels
- Ground Floor Underfloor Heating
- Driveway & Double Garage
- South Facing Rear Garden
- Popular Village Setting
- Popular Schools Nearby
- EPC - C



These particulars have been prepared as accurately and as reliably as possible, but should not be relied upon as 'statement of fact'. If there is any point which is of particular importance to you, please contact the office and we would be pleased to check the information. We have not tested any services, appliances, equipment or facilities and nothing in these particulars should be deemed to be a statement that they are in good working order, or that the property is in good structural condition or otherwise. Any areas, measurements, floor plans or distances referred to are given as a guide only and are not precise. Purchasers must satisfy themselves by inspection or by otherwise regarding the items mentioned above and as to the correctness of each of the statements contained in these particulars. No person in the employment of Ashtons has any authority to make or give any representation or warranty whatsoever in relation to this property or these particulars nor enter into any contract relating to the property on behalf of the vendor.



Back Lane  
Riccall, York  
YO19 6PT

Offers In Excess Of  
£550 000

 5  4

A deceptively spacious five bedroom detached home located in the popular village of Riccall. Offering approximately 1,800 sq ft of internal accommodation, a garden across two aspects, a double garage, and ample driveway parking, this property makes an ideal family home. Riccall is located approximately 8 miles south of York and offers a variety of local amenities, including convenience stores and pubs, along with frequent commuter links to the city centre and York Designer Outlet. Riccall is also within the catchment area for several schools, including Fulford School.

Internally, this well presented property, with ground floor underfloor heating, features an entrance hall that provides access to the spacious living room on the left. Featuring a large window overlooking the front aspect, this room is flooded with natural light throughout the day. At the end of the hall is the modern open plan kitchen diner, which offers a range of contemporary wall and base units, allowing for ample storage and worktop space. An archway leads into the dining area, which features French doors opening out to the landscaped rear garden. Conveniently, there is a utility room off the kitchen, allowing for additional white goods. The ground floor accommodation is completed by a large cloakroom.

On the first floor are three well proportioned bedrooms, with the two largest offering integrated storage. The master bedroom also boasts a modern ensuite bathroom in addition to the four piece family bathroom. The internal accommodation is completed by two further bedrooms on the second floor, with the larger of the two benefiting from an additional ensuite.

Set on a generous plot, this property offers a wonderful south facing rear garden, which has been landscaped to include both patio and lawn areas, all enclosed by hedge boundaries. To the front of the property, there is ample driveway parking, along with a further lawn and a double garage.

