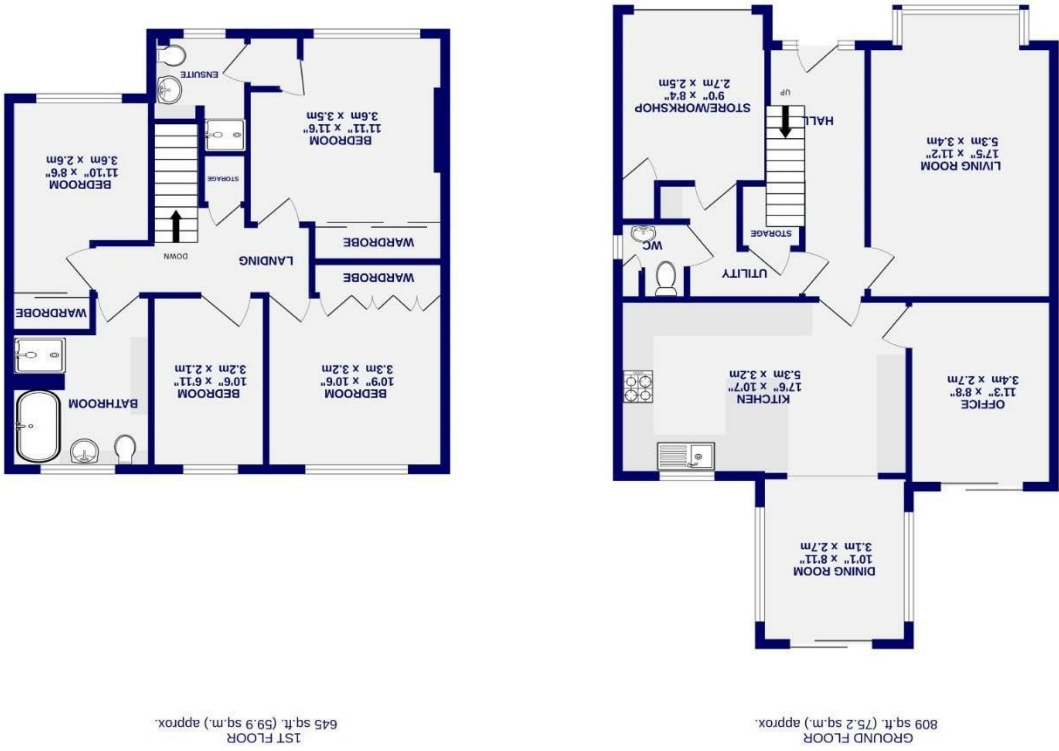


These particulars have been prepared as accurately and as reliably as possible, but should not be relied upon as 'statement of fact'. If there is any point which is of particular importance to you, please contact the office and we would be pleased to check the information. We have not tested any services, appliances, equipment or facilities and nothing in these particulars should be deemed to be a statement that they are in good working order, or that the property is in good structural condition or otherwise. Any areas, measurements, floor plans or distances referred to are given as a guide only and are not precise. Purchasers must satisfy themselves by inspection or by otherwise regarding the items mentioned above and as to the correctness of each of the statements contained in these particulars. No person in the employment of Ashtons has any authority to make or give any representation or warranty whatsoever in relation to this property or these particulars nor enter into any contract relating to the property on behalf of the vendor.

- EPC TBA
- Popular Residential Area
- Driveway & Garage
- Two / Three Reception Rooms
- Upgraded Kitchen
- Bathroom, Ensuite & W.C
- Four Bedrooms
- Detached Family Home

Freehold
Council Tax Band - E

Roundhill Link Rawcliffe, York YO30 4UN



Roundhill Link
Rawcliffe, York
YO30 4UN

Offers Over £500,000

4 2

This substantial detached modern home offers wonderful, flexible accommodation in a cul-de-sac location on Roundhill Link, situated in the highly sought-after residential area of Rawcliffe. Positioned just north of York, the property is ideally located for easy access to the city centre as well as excellent road links for commuters. A range of local amenities, including supermarkets, eateries, gyms, and picturesque Rawcliffe Lake, are just a short distance away, making this home particularly appealing.

Internally, the property features an entrance hall leading to a charming reception room positioned at the front of the house. A large bay window overlooks the front aspect, flooding the room with natural light. To the rear, the stunning open-plan kitchen diner has been upgraded by the current owners and now boasts a bespoke kitchen design. Offering ample storage, the kitchen has been thoughtfully designed for both family living and entertaining. Sleek high-gloss units are complemented by high-quality Quartz worktops and a striking splashback. The kitchen is fitted with two Neff ovens & warm drawer, induction hob & dishwasher and includes a full height fridge and full height freezer. Beyond the kitchen is the bright and airy dining room, which benefits from dual-aspect windows and expansive bi-folding doors that open onto the beautifully landscaped rear garden.

Additionally, the property includes a second reception room. The garage has been reconfigured to incorporate a storage area at the front, as well as a convenient utility room, cloakroom, and storage cupboard.

Upstairs, there are three double bedrooms and one generous single bedroom, with the master featuring built-in storage and an en-suite bathroom with ample storage. The first floor is completed by a stylishly upgraded family bathroom.

