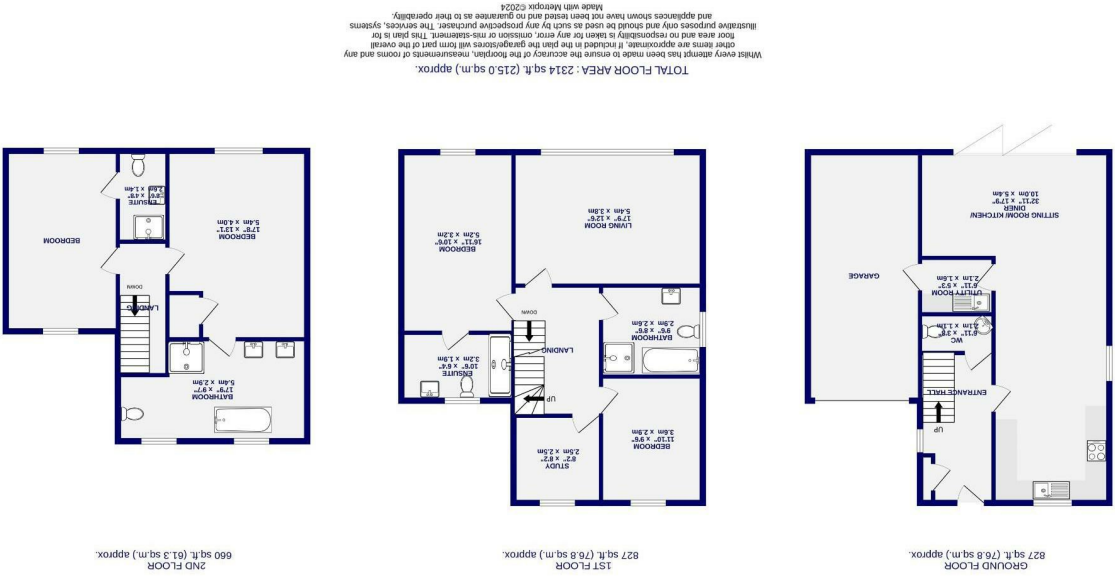




# Mount Vale Gardens , York YO24 1AL

Freehold  
Council Tax Band - F

- Large Family House On An Exclusive Development
- Five Bedrooms
- Open Plan Living
- First Floor Drawing Room
- Four Bathrooms & Cloakroom
- Close To York Knivesmire & Racecourse
- EPC - B



These particulars have been prepared as accurately and as reliably as possible, but should not be relied upon as 'statement of fact'. If there is any point which is of particular importance to you, please contact the office and we would be pleased to check the information. We have not tested any services, appliances, equipment or facilities and nothing in these particulars should be deemed to be a statement that they are in good working order, or that the property is in good structural condition or otherwise. Any areas, measurements, floor plans or distances referred to are given as a guide only and are not precise. Purchasers must satisfy themselves by inspection or by otherwise regarding the items mentioned above and as to the correctness of each of the statements contained in these particulars. No person in the employment of Ashtons has any authority to make or give any representation or warranty whatsoever in relation to this property or these particulars nor enter into any contract relating to the property on behalf of the vendor.



Mount Vale Gardens  
, York  
YO24 1AL

£775,000

5 4

We are proud to offer this large, semi detached family house forming part of this exclusive development, just off Mount Vale.

The fantastic location is within walking distance of both the city centre and station, with all the benefits of York Knavesmire and racecourse practically on the doorstep.

A small development constructed by Mulgrave Properties approximately four years ago, of only 12 four and five bedroom luxury homes combining space and luxury in one of York's most sought after locations.

This property offers five bedrooms over two floors as well as a large, open plan living area occupying most of the ground floor with the addition of a first floor drawing room. The five bedrooms are complimented by four bathrooms, three of which are en-suites, as well as a ground floor cloakroom.

Outside there is a double width driveway, large tandem integral garage and rear gardens.

A rare opportunity to acquire a fantastic family home.

Council Tax Band F  
Although the property is freehold there is a small annual maintenance charge to be paid for the development of circa £300 PA

