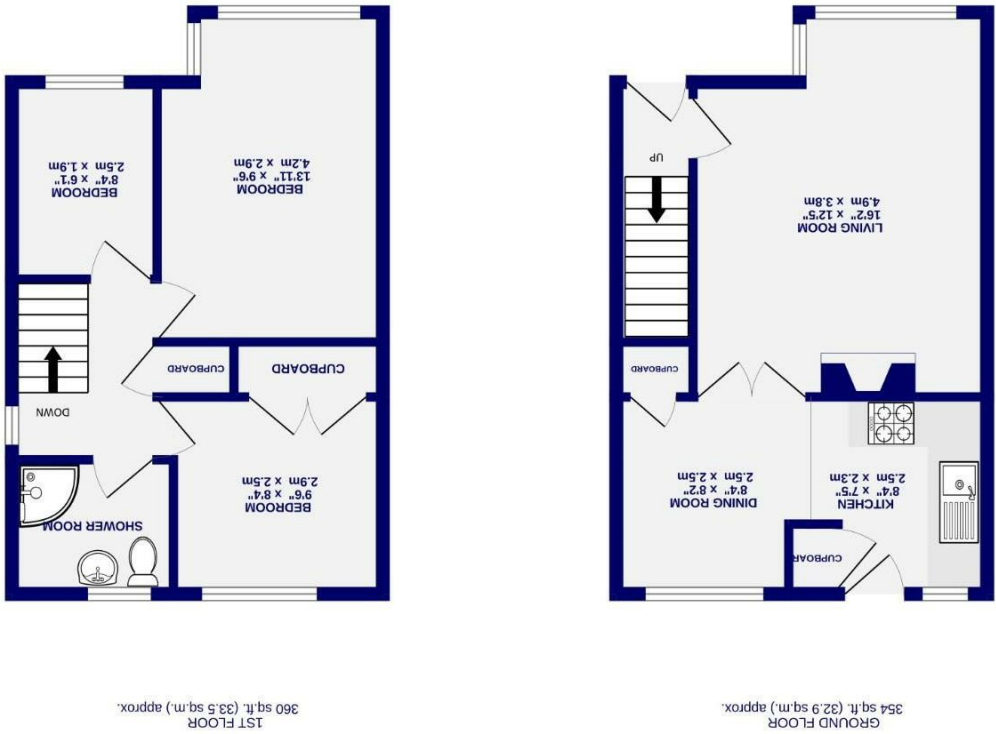


These particulars have been prepared as accurately and as reliably as possible, but should not be relied upon as 'statement of fact'. If there is any point which is of particular importance to you, please contact the office and we would be pleased to check the information. We have not tested any services, appliances, equipment or facilities and nothing in these particulars should be deemed to be a statement that they are in good working order, or that the property is in good structural condition or otherwise. Any areas, measurements, floor plans or distances referred to are given as a guide only and are not precise. Purchasers must satisfy themselves by inspection or by otherwise regarding the items mentioned above and as to the correctness of each of the statements contained in these particulars. No person in the employment of Ashtons has any authority to make or give any representation or warranty whatsoever in relation to this property or these particulars nor enter into any contract relating to the property on behalf of the vendor.

- EPC - D
- Expected To Be Popular
- Perfect First Property
- Garage & Driveway
- Generous Garden
- Ideal Location
- Three Bedrooms
- Semi Detached House

Freehold
Council Tax Band - C

Heath Moor Drive Fulford, York YO10 4NF



Heath Moor Drive
Fulford, York
YO10 4NF

£335,000

3 1

Located in the popular residential area of Fulford, to the south of York, is this charming semi detached house. Offering three bedrooms, spacious ground floor accommodation, and a wonderful rear garden, this property is sure to appeal to a range of buyers. Heath Moor Drive is ideally situated close to Fulford's varied amenities, Fulford Secondary School, and commuter links to the city centre.

Internally, the property comprises an entrance hall leading to the reception room at the front. This bright and airy space features a large bay window that allows natural light to flood the room. French doors open into the open plan kitchen diner, which includes an array of wall and base units, providing ample storage and space for freestanding white goods.

On the first floor are three well proportioned bedrooms, with the second bedroom benefiting from a built in wardrobe. A three piece family bathroom completes this level.

Externally, the property boasts a generous rear garden, primarily laid to lawn with patio areas and flower beds, all enclosed by fence and hedge boundaries. With a westerly aspect, the garden offers an ideal space for relaxation or entertaining. The property also benefits from a driveway that runs the length of the house and leads to a single garage, providing additional parking or storage options.

A delightful home in a sought after location, early viewing is highly recommended.

Council Tax Band- C

