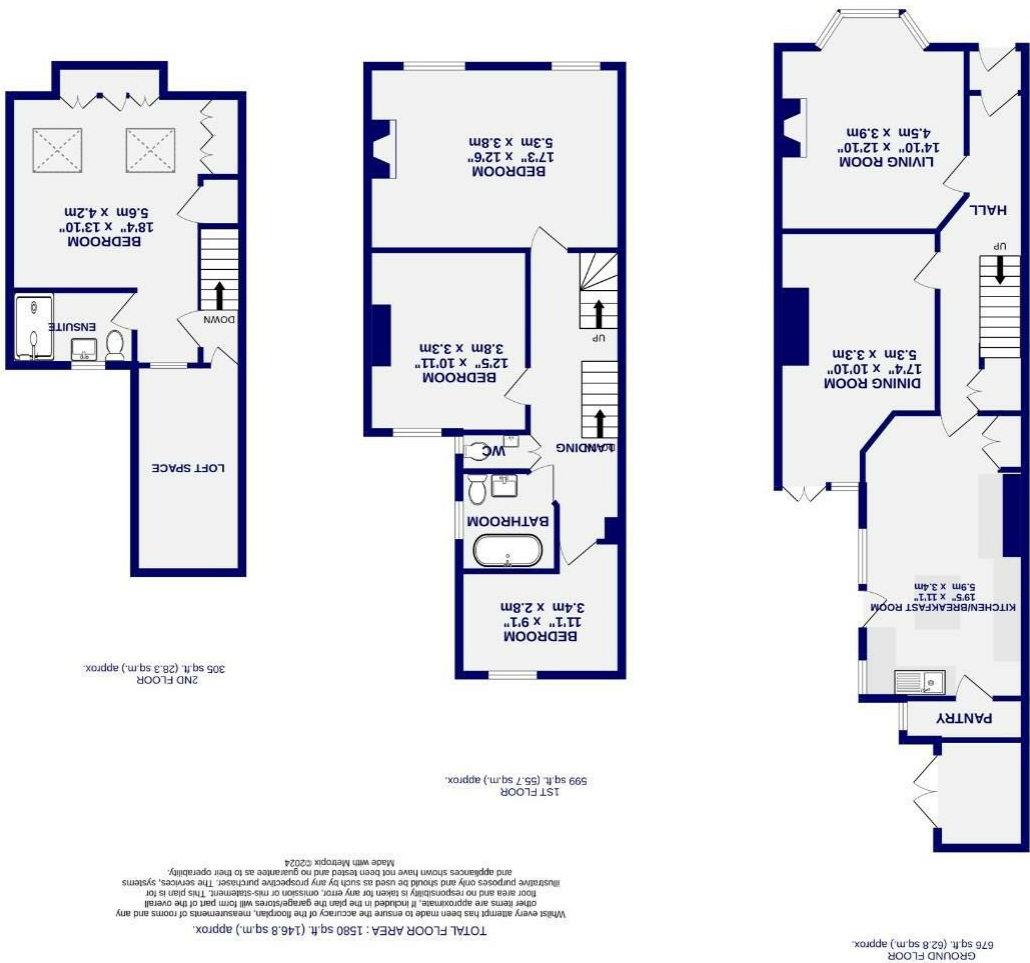


These particulars have been prepared as accurately and as reliably as possible, but should not be relied upon as 'statement of fact'. If there is any point which is of particular importance to you, please contact the office and we would be pleased to check the information. We have not tested any services, appliances, equipment or facilities and nothing in these particulars should be deemed to be a statement that they are in good working order, or that the property is in good structural condition or otherwise. Any areas, measurements, floor plans or distances referred to are given as a guide only and are not precise. Purchasers must satisfy themselves by inspection or by otherwise regarding the items mentioned above and as to the correctness of each of the statements contained in these particulars. No person in the employment of Ashtons has any authority to make or give any representation or warranty whatsoever in relation to this property or these particulars nor enter into any contract relating to the property on behalf of the vendor.

- End Townhouse
  - Four Bedrooms
  - Two Reception Rooms
  - Retains A Wealth Of Original Features
  - Sought After Position
  - South Facing Courtyard
  - Beautifully Presented Throughout
  - EPC - D
- Freehold  
Council Tax Band - D

# St. Clements Grove, Bishopthorpe Road, YO23 1JZ





St. Clements Grove  
Bishopthorpe Road, York  
YO23 1JZ

Offers In Excess Of  
£650 000

 4  2

Surely one of the finest examples of its type, this wonderful period home really must be viewed to be appreciated. A much loved family home for many years, this property has been updated throughout with the addition of a generous loft conversion creating a wonderful master bedroom. Beautifully designed, this property retains many of its original features such as Victorian tiled flooring, picture rails and ceiling cornices.

St Clements Grove is set to the South of York, offering a sense of peace and seclusion set on a street running down to Rowntree's Park. Just a short stroll from the many, much acclaimed amenities Bishopthorpe Road has to offer, this property is also well placed for access to the city centre and railway station.

The property is sure to appeal to a range of buyers and boasts spacious accommodation including two well proportioned reception spaces to the ground floor in addition to a wonderful fitted kitchen diner with a central island and pantry. Set on the first floor are three well proportioned bedrooms, all featuring ornate fireplaces, in addition to the recently updated bathroom. On the second floor is the stunning master bedroom with an expansive window that over looks Terry's Chocolate Factory, and the Knavesmire beyond. Fitted with a range of integrated storage, there is also a stunning shower ensuite.

To the rear, doors lead from the reception room onto an enclosed South facing courtyard style garden, which has been designed with outdoor seating in mind. Conveniently there is also an outbuilding for storage. Early viewing really is essential to appreciate all that this wonderful home has to offer.

Council Tax Band: D

