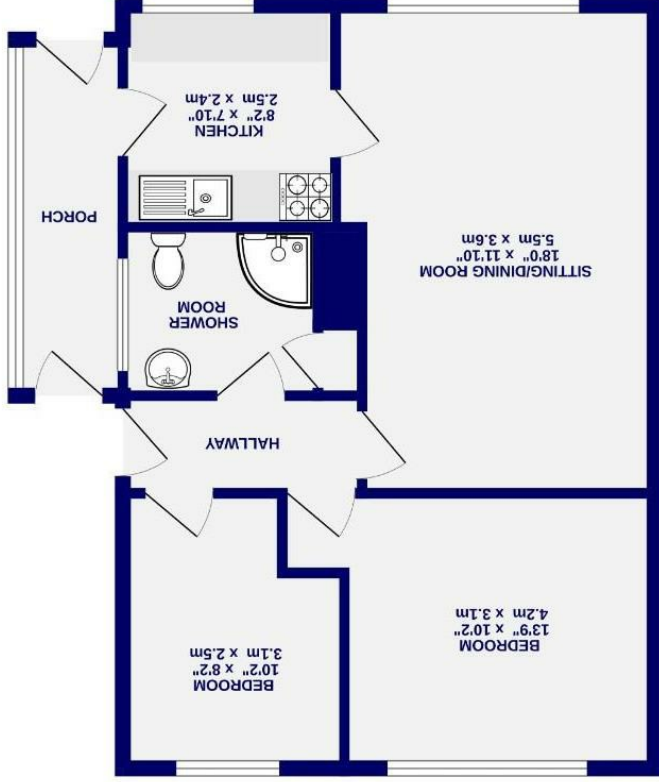


These particulars have been prepared as accurately and as reliably as possible, but should not be relied upon as 'statement of fact'. If there is any point which is of particular importance to you, please contact the office and we would be pleased to check the information. We have not tested any services, appliances, equipment or facilities and nothing in these particulars should be deemed to be a statement that they are in good working order, or that the property is in good structural condition or otherwise. Any areas, measurements, floor plans or distances referred to are given as a guide only and are not precise. Purchasers must satisfy themselves by inspection or by otherwise regarding the items mentioned above and as to the correctness of each of the statements contained in these particulars. No person in the employment of Ashtons has any authority to make or give any representation or warranty whatsoever in relation to this property or these particulars nor enter into any contract relating to the property on behalf of the vendor.

These particulars are intended to provide a guide only and are not precise. Purchasers must satisfy themselves by inspection or by otherwise regarding the items mentioned above and as to the correctness of each of the statements contained in these particulars. No person in the employment of Ashtons has any authority to make or give any representation or warranty whatsoever in relation to this property or these particulars nor enter into any contract relating to the property on behalf of the vendor.



GROUND FLOOR 602 sq. ft. (55.9 sq.m.) approx.

- Semi Detached Bungalow
- Two Bedrooms
- Popular Residential Area
- Turn Key Ready
- Newly Fitted Kitchen
- Porch & Hallway
- Gas Central Heating
- Double Glazing
- Established Gardens
- EPC - C

Freehold
Council Tax Band - B

Acorn Way Woodthorpe, York YO24 2RP



Acorn Way
Woodthorpe, York
YO24 2RP

£250,000



Ashtons Estate Agents are pleased to offer this newly decorated, two bedroom bungalow in the popular and sought after quiet location of Woodthorpe. Offering easy access to a range of local amenities including local shops, pub, eateries and medical facilities. This property is also ideally placed for regular commuter links to York city centre, the train station and the York ring road for further afield travel.

The property can be accessed from either the handy porch and kitchen or the main entrance hallway to the side of the home. The newly fitted, modern kitchen with wooden worktops offers a space for food preparation with bright views of the well manicured front garden and beyond. Into the living with plentiful space for a dining area, it has an expansive window inviting the daylight to bathe the room in natural daylight.

From the main entrance hall are the two bedrooms to the rear. The primary bedroom is a generous size and both have lovely views of the well established and maintained lush garden. The bathroom is modern and neutral in design with a white suite and corner shower unit.

With beautiful established front and rear gardens, off street parking, this home is offered with no onward chain and is ready for a new owner to make their mark on it and make it their home. An early viewing is highly recommended to appreciate all its benefits.

Council Tax Band- B

