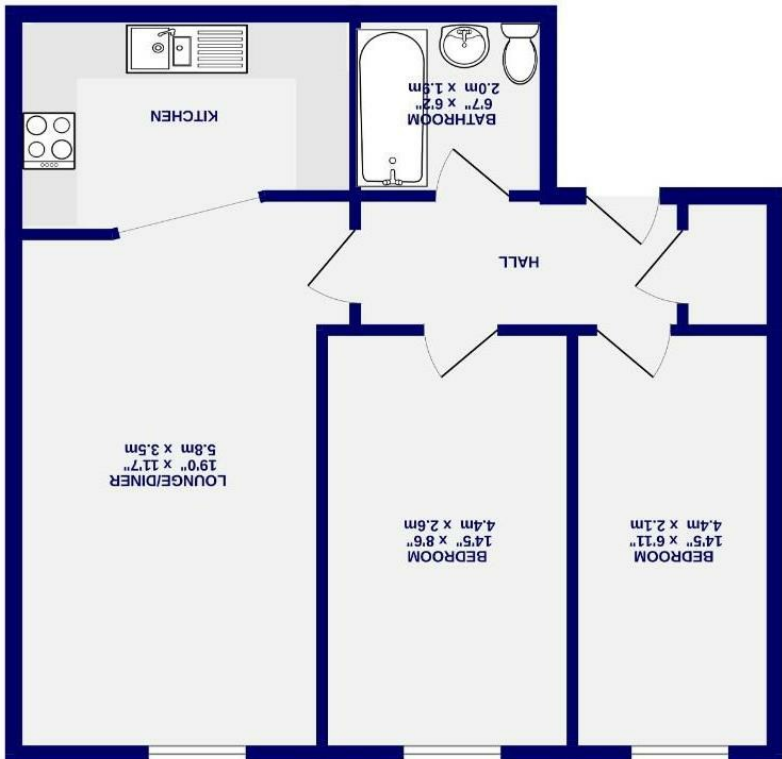


property on behalf of the vendor.

TOTAL ROOM AREA - 605 sq. ft. (56 sq. ft. approx.)
 Whilst every attempt has been made to ensure the accuracy of the figures, measurements of rooms and any other areas and no responsibility is taken for any gross or clerical error. The figures are for general information only and should not be used as a basis for any proposition or purchase. The service, systems and appliances shown have not been tested or guaranteed as to their operability.
 Made up with Molepox G2024

2ND FLOOR
605 sq.ft. (56.2 sq.m.) approx.



- Second Floor Apartment
- Two Double Bedrooms
- Private Secure Parking Space
- Sought After Central Development
- Open Plan Lounge Dining Kitchen
- Ideal First Time Buy Or Investment
- EPC C

Leasehold
Council Tax Band - D

Piccadilly
City Centre, York
YO1 9QP



Piccadilly
City Centre, York
YO1 9QP

£225,000

 2  1

A second floor two bedroom apartment, with allocated, secure parking, in this popular city central development, offered with no onward chain.

Located in the popular Piccadilly Plaza development, positioned within the the city walls on Piccadilly, this apartment is just a short walk to Parliament Street and York Minster. The property benefits from a range of local amenities including restaurants, bakeries, coffee shops and bars within close proximity, as well as York Train Station.

The accommodation in brief comprises a central hallway which leads to the open plan lounge dining kitchen. The kitchen offers shaker units, wood effect worktops and blue tiled splash back, all of which are complemented by a range of integrated appliances. The two double bedrooms and family bathroom complete the accommodation. As the property is situated on the top floor, there is the added benefit of extra storage space in the loft, which is partially boarded and easily accessed by a drop down ladder.

Externally, the gated development offers communal seating areas as well as bin and bike stores. The property includes an allocated underground secure parking space.

Leasehold
Length of lease- 125 years from 1 January 1999
Ground rent £100 per annum
Ground rent review period N/A
Service charge £1970 per annum

There is a Registration fee for letting the property with the freeholder

Council Tax Band- D

