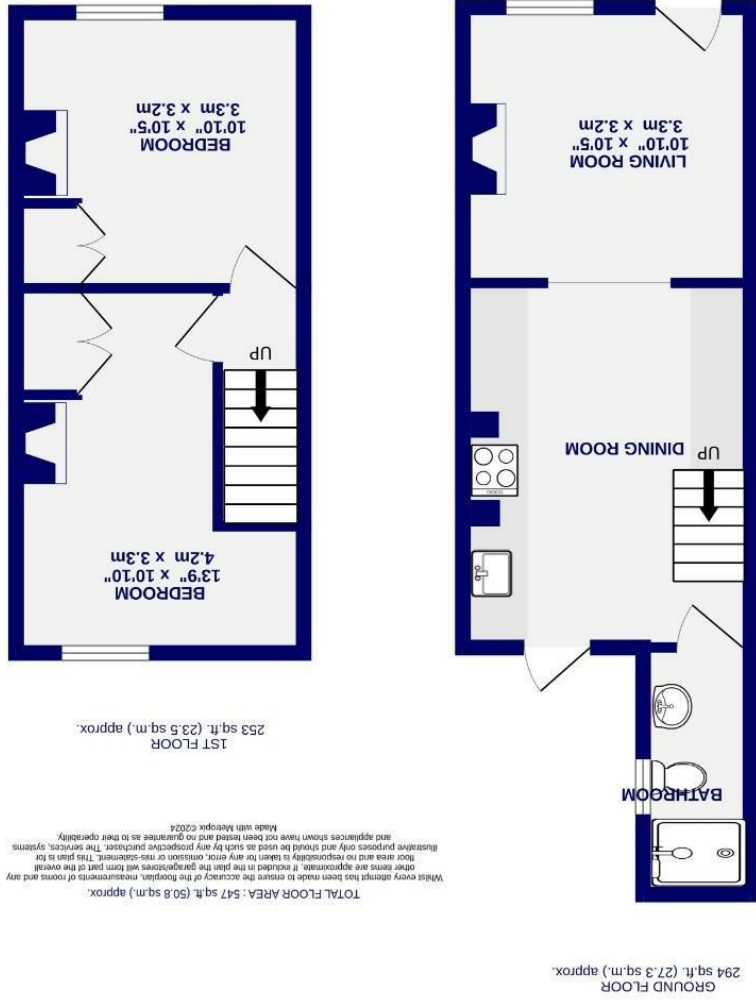


These particulars have been prepared as accurately and as reliably as possible, but should not be relied upon as 'statement of fact'. If there is any point which is of particular importance to you, please contact the office and we would be pleased to check the information. We have not tested any services, appliances, equipment or facilities and nothing in these particulars should be deemed to be a statement that they are in good working order, or that the property is in good structural condition or otherwise. Any areas, measurements, floor plans or distances referred to are given as a guide only and are not precise. Purchasers must satisfy themselves by inspection or by otherwise regarding the items mentioned above and as to the correctness of each of the statements contained in these particulars. No person in the employment of Ashtons has any authority to make or give any representation or warranty whatsoever in relation to this property or these particulars nor enter into any contract relating to the property on behalf of the vendor.

Dale Street Clementhorpe, York YO23 1AE

- Freehold
- Council Tax Band - B
- Period Cottage
- 2 Double Bedrooms
- South East Facing Garden
- Forecourted Terrace
- Modern Bathroom
- Renovated
- EPC TBC



Dale Street
Clementhorpe, York
YO23 1AE

£325,000



A charming fore courted period cottage situated in this small desirable street just outside the historic city walls.

Located on Dale Street, behind the ornate Scarcroft Primary school and within a short walk of Rowntree Park, Bishopthorpe Road and its variety of local amenities. This location is also ideal for commuters as it is within three quarters of a mile of York Railway Station.

The accommodation in brief comprises, the front lounge with its feature fire place and modern sashed window, which opens onto the kitchen dining space with exposed brick chimney breast, sleek black kitchen units and solid wood worktops. The rear bathroom with its walk in shower and beautiful tiling is likely to appeal to a range of purchasers. To the first floor are two double bedrooms each with fitted wardrobes.

Externally, the property has a front fore courted garden and a large south east rear garden, which is a decked seating area to make the most of the sunshine with white washed walls and raised planters.

Council Tax Band- B

