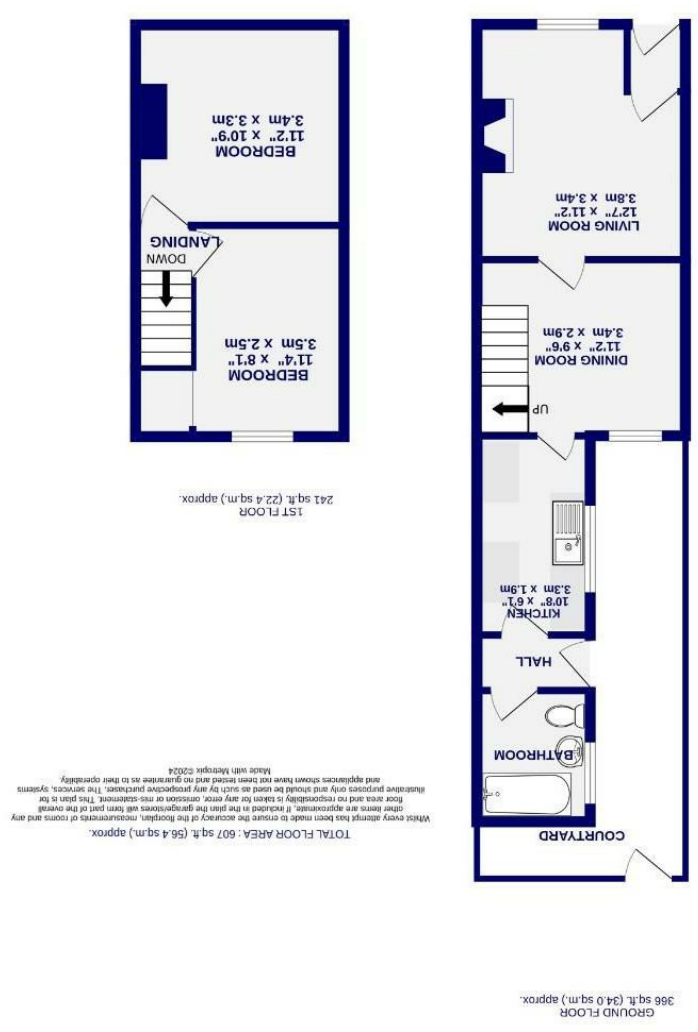


These particulars have been prepared as accurately and as reliably as possible, but should not be relied upon as 'statement of fact'. If there is any point which is of particular importance to you, please contact the office and we would be pleased to check the information. We have not tested any services, appliances, equipment or facilities and nothing in these particulars should be deemed to be a statement that they are in good working order, or that the property is in good structural condition or otherwise. Any areas, measurements, floor plans or distances referred to are given as a guide only and are not precise. Purchasers must satisfy themselves by inspection or by otherwise regarding the items mentioned above and as to the correctness of each of the statements contained in these particulars. No person in the employment of Ashtons has any authority to make or give any representation or warranty whatsoever in relation to this property or these particulars nor enter into any contract relating to the property on behalf of the vendor.

- EPC TBC
- Offered With NO Onward Chain
- Period Features
- Sought After Location
- Refurbishment
- In Need Of Cosmetic
- Two Double Bedrooms
- A Period Mid Terrace House

Freehold  
Council Tax Band - B

# Ruby Street South Bank, York YO23 1EE



Ruby Street  
South Bank, York  
YO23 1EE

£240,000



A period two bedroom mid terrace house in this secluded cul de sac at the heart of the ever popular South Bank. The property has been much loved by the previous resident but now requires some cosmetic refurbishment and upgrades to both the kitchen and bathroom. This property is ideal for someone looking to move in and add value themselves.

Located in South Bank, it is a popular residential area fringed by the very popular amenities of York Racecourse, The Little Knavesmire, Bishopthorpe Road Shops, Rowntree Park and the Millennium Bridge. This is arguably one of York's most sought after locations to live.

The accommodation in brief comprises, a front entrance hallway leads to a living room with feature fireplace and a central dining room with a window onto the rear yard. The kitchen whilst dated is functional and has space for a range of appliances. The rear bathroom is a good sized and well presented offering a a three piece suite with a shower over the bath. To the first floor are two double bedrooms. The property is double glazed throughout and the gas central heating boiler was fitted in November 2023.

Externally, the property has on street parking to the front and a courtyard to the rear.

Council Tax Band- B

