

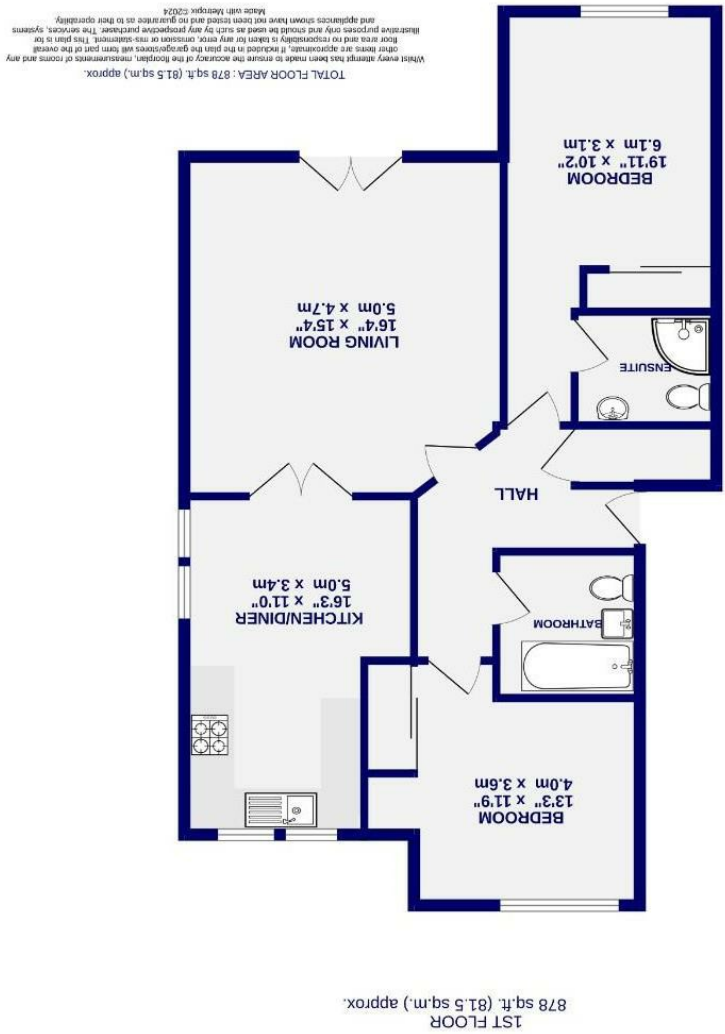


St. Chads Wharf, Off Bishopthorpe Road, York

YO23 1LX

Leasehold
Council Tax Band - E

- First Floor Apartment
- Two Double Bedrooms
- Two Bathrooms
- Open Plan Dining Kitchen
- Rear Lounge With Juliet Balcony
- Off Street Private Allocated Parking
- Space. Visitor Spaces Available
- EPC - B



These particulars have been prepared as accurately and as reliably as possible, but should not be relied upon as 'statement of fact'. If there is any point which is of particular importance to you, please contact the office and we would be pleased to check the information. We have not tested any services, appliances, equipment or facilities and nothing in these particulars should be deemed to be a statement that they are in good working order, or that the property is in good structural condition or otherwise. Any areas, measurements, floor plans or distances referred to are given only and are not precise. Purchasers must satisfy themselves by inspection or by otherwise regarding the items mentioned above and as to the correctness of each of the statements contained in these particulars. No person in the employment of Ashtons has any authority to make or give any representation or warranty whatsoever in relation to this property or these particulars nor enter into any contract relating to the property on behalf of the vendor.

St. Chads Wharf, Off
Yorkshire Road
YO23 1LX

£375,000

 2  2

This large first-floor, two-bedroom apartment is located in the highly sought-after St Chads Wharf building, offering views over manicured communal gardens and views towards the River Ouse. This private first-floor apartment, features two double bedrooms and has been modernised by the current owners. Offered for sale with no onward chain the property is likely to be popular.

The central entrance hallway leads to a modern open-plan dining kitchen with French doors opening onto the rear lounge and a Juliet balcony facing the river. The property also includes two double bedrooms with fitted wardrobes, a modern family bathroom with a shower over the bath, and an ensuite shower room in the master bedroom.

Externally, the property provides access to well-maintained communal gardens, communal cycle shed, visitor parking, and a private parking space. There is also a private gate through to the riverside path that takes you to the millennium bridge, Rowntree Park and the city centre.

Leasehold
Length of lease- 975 years remaining
Ground rent £0
Ground rent review period N/A
Service charge £1,879 per annum

Council Tax Band - E

