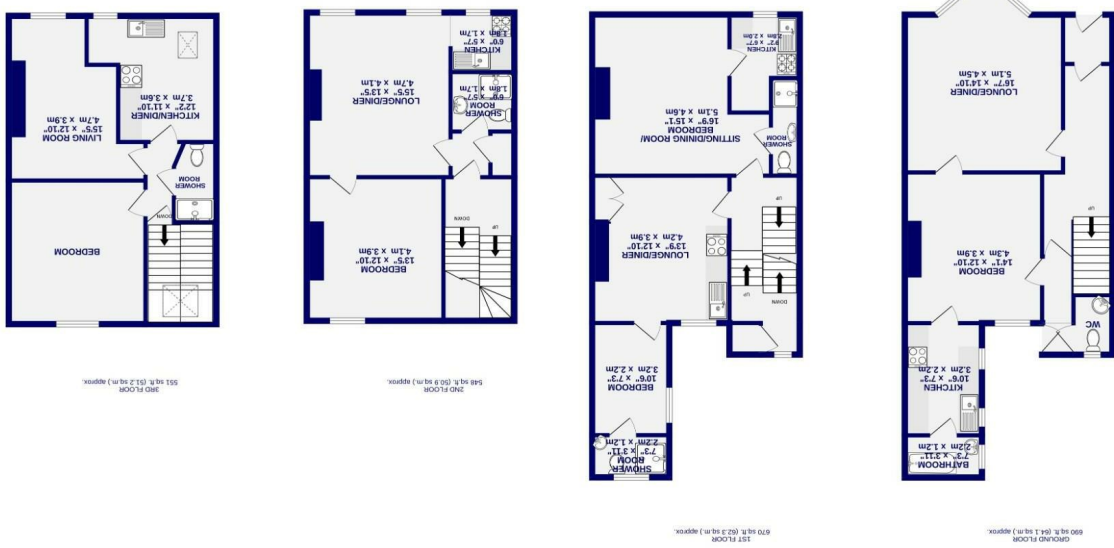


These particulars have been prepared as accurately and as reliably as possible, but should not be relied upon as 'statement of fact', if there is any point which is of particular importance to you, please contact the office and we would be pleased to check the information. We have not tested any services, appliances, equipment or facilities and nothing in these particulars should be deemed to be a statement that they are in good working order, or that the property is in good structural condition or otherwise. Any areas, measurements, floor plans or distances referred to are given as a guide only and are not precise. Purchasers must satisfy themselves by inspection or by otherwise regarding the items mentioned above and as to the correctness of each of the statements contained in these particulars. No person in the employment of Ashtons has any authority to make or give any representation or warranty whatsoever in relation to this property or these particulars nor enter into any contract relating to the property on behalf of the vendor.

- EPC- TBA
- Prime Location
- Rental income Circa £49,800k PA
- All let On AST contracts
- 1 x Studio Apartment
- 4 x 1 Bed Apartments
- 5 Apartments
- Large 4 Storey Terrace House

Freehold
Council Tax Band - G

Grosvenor Terrace , York YO30 7AG



Grosvenor Terrace
, York
YO30 7AG

£695,000



A magnificent end terrace property set in this sought after location overlooking Bootham Park Hospital and grounds towards York Minster.

The property has for some time been divided into 5 self contained apartments, all currently let on AST contracts. There are four, one bedroom apartments as well as a studio apartment commanding a significant income.

The income could be further enhanced by a scheme of modernisation and improvements, capitalising on the fantastic location so close to the city centre. A great investment opportunity at a most realistic figure.

Furniture content to be negotiable

Council Tax Band- G

