



# The Village Strensall, York YO32 5XS

£390,000



Located within the popular residential village of Strensall, which is positioned to the north of York, is this wonderful detached dormer bungalow with an exceptional rear garden. A much loved home for many years, this property has been well-maintained throughout yet offers great scope for further development (subject to the relevant planning permissions). Strensall is a popular village on the outskirts of York, and offers a variety of local amenities, including shops, schools, pubs, and eateries, and benefits from a regular bus service through to the city centre and train station.

Internally, the property offers an entrance hall which provides access into two separate reception spaces. The living room benefits from windows on multiple aspects, making it a bright and airy space. Overtime the dining room has been opened up into the kitchen to create an open plan kitchen diner, with access out to a bright conservatory that overlooks the immaculately kept garden. Generous in size this property offers four well proportioned bedrooms, with one on the ground floor with built-in storage and three on the first floor. Off one of the first floor bedrooms is a shower ensuite with the main bathroom on the ground floor.

Externally is ample driveway parking to the front which leads to a single detached garage set back from the property. The most impressive aspect of this property is its plot, as there is a garden to the front and the most generous rear garden that benefits from a south facing aspect. Mainly laid to lawn, this wonderful garden also offers patio and flower bed areas creating great opportunity for further development (subject to the relevant planning permissions).

Offered with no onward chain, this exciting property must be viewed to appreciate all the potential that is on offer.

Council Tax Band- D

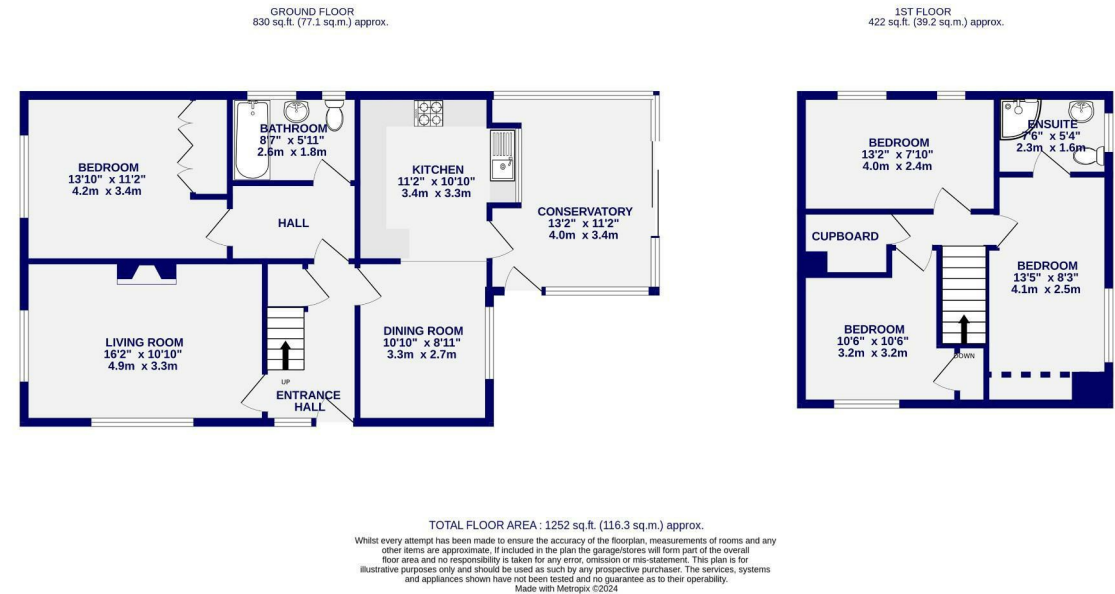




# The Village Strensall, York YO32 5XS

Freehold  
Council Tax Band - D

- Fantastic Development Opportunity
- Detached Dormer Bungalow
- Four Bedrooms
- South Facing Garden
- Popular Village Setting
- Driveway & Garage
- Offered With No Chain
- EPC- D



These particulars have been prepared as accurately and as reliably as possible, but should not be relied upon as 'statement of fact'. If there is any point which is of particular importance to you, please contact the office and we would be pleased to check the information. We have not tested any services, appliances, equipment or facilities and nothing in these particulars should be deemed to be a statement that they are in good working order, or that the property is in good structural condition or otherwise. Any areas, measurements, floor plans or distances referred to are given as a guide only and are not precise. Purchasers must satisfy themselves by inspection or by otherwise regarding the items mentioned above and as to the correctness of each of the statements contained in these particulars. No person in the employment of Ashtons has any authority to make or give any representation or warranty whatsoever in relation to this property or these particulars nor enter into any contract relating to the property on behalf of the vendor.