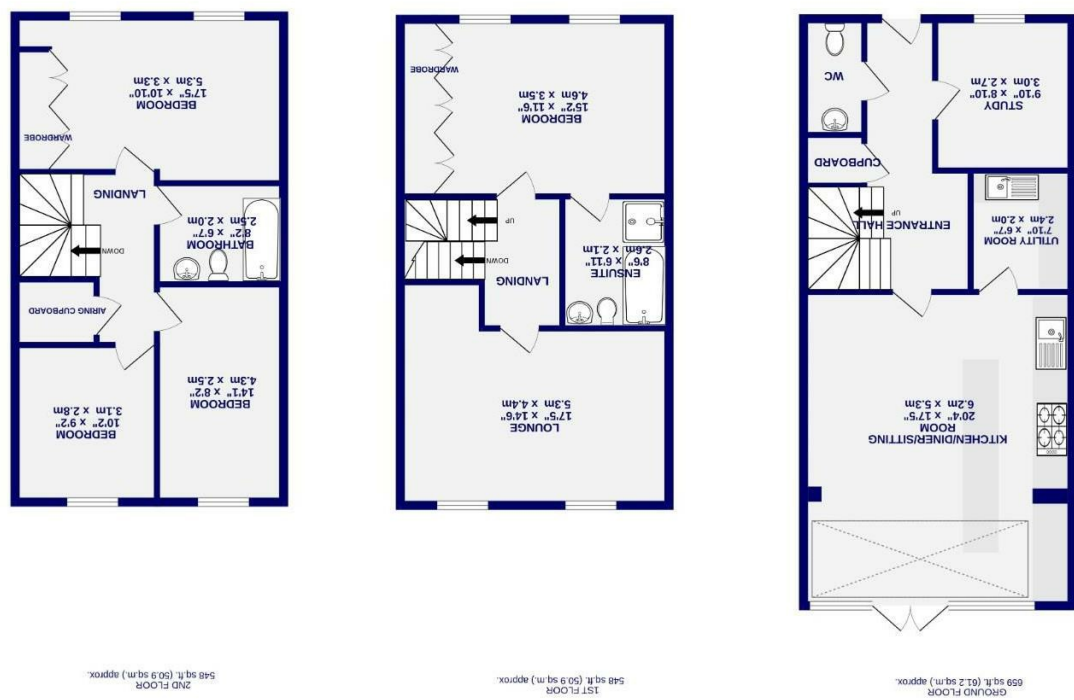


These particulars have been prepared as accurately and as reliably as possible, but should not be relied upon as 'statement of fact'. If there is any point which is of particular importance to you, please contact the office and we would be pleased to check the information. We have not tested any services, appliances, equipment or facilities and nothing in these particulars should be deemed to be a statement that they are in good working order, or that the property is in good structural condition or otherwise. Any statements contained in these particulars referred to are given as a guide only and are not precise. Purchasers must satisfy themselves by inspection or by otherwise regarding the items mentioned above and as to the correctness of each of the areas, measurements, floor plans or distances referred to. No person in the employment of Ashtons has any authority to make or give any representation or warranty whatsoever in relation to this property or these particulars nor enter into any contract relating to the property on behalf of the vendor.

# Pavilion Row, Main Street, Fulford, York, YO10 4LJ

Freehold  
Council Tax Band - F

- Town House
- Open Plan Lounge/ Dining/ Kitchen
- Four Double Bedrooms
- Courtyard Garden
- Private Parking Off Street
- Fulford School Catchment
- EPC C



TOTAL FLOOR AREA: 1,754 sq ft. (162.9 sq m.) approx.  
 While every attempt has been made to ensure the accuracy of the figures contained here, measurements of doors, windows, rooms and any other items are approximate and no responsibility is taken for any error or misstatement. The land is for business purposes only and should not be used as such. As to their operability or efficiency they are given as to their operability or efficiency they are given as to their operability or efficiency they are given.





Pavilion Row, Main Street  
Fulford, York  
YO10 4LJ

£585,000



A grand four bedroom town house with parking and a courtyard garden located in the very popular village of Fulford.

Located in Fulford, the area is highly regarded as one of York's most sought after residential areas, due to its range of local services including catchment for the Ofsted rated outstanding Fulford school, locals shops cafes and easy access to both York city centre and the A64.

Forming part of the sought after Pavilion Row, this period style town house is designed in a traditional style but with all the benefits of modern functionality.

Arranged over three floors, the ground floor presents an open plan kitchen/breakfast/ living space with french doors as part of a garden atrium that opens out on to the courtyard garden. The kitchen benefits from a central island, with granite worktops and modern classic units, also comprising a utility room with ample cupboard space and incorporating washing machine and tumble drier. To the front is a good sized study room and a ground floor cloakroom w.c.

To the first floor is a spacious formal living room which looks to the rear over the courtyard garden. The main bedroom with a modern en-suite bathroom.

To the second floor comprises three double bedrooms and a family bathroom.

Externally, the property benefits from a walled courtyard garden and parking for two cars accessed via electric gates.

Council Tax Band F

